



US 20170107537A1

(19) **United States**

(12) **Patent Application Publication**

Glorioso, III et al.

(10) **Pub. No.: US 2017/0107537 A1**

(43) **Pub. Date: Apr. 20, 2017**

(54) **IDENTIFICATION OF MUTATIONS IN HERPES SIMPLEX VIRUS ENVELOPE GLYCOPROTEINS THAT ENABLE OR ENHANCE VECTOR RETARGETING TO NOVEL NON-HSV RECEPTORS**

(71) Applicant: **University of Pittsburgh - Of the Commonwealth System of Higher Education**, Pittsburgh, PA (US)

(72) Inventors: **Joseph C. Glorioso, III**, Pittsburgh, PA (US); **Hiroaki Uchida**, Hachioji-Shi (JP); **Justus B. Cohen**, Allison Park, PA (US)

(21) Appl. No.: **15/137,953**

(22) Filed: **Apr. 25, 2016**

Related U.S. Application Data

(63) Continuation of application No. 13/641,649, filed on Dec. 28, 2012, filed as application No. PCT/US2011/032923 on Apr. 18, 2011.

(60) Provisional application No. 61/325,137, filed on Apr. 16, 2010.

Publication Classification

(51) **Int. Cl.**
C12N 15/86 (2006.01)

(52) **U.S. Cl.**
CPC **C12N 15/86** (2013.01); **C12N 2710/16643** (2013.01); **C12N 2710/16622** (2013.01)

(57) **ABSTRACT**

The present invention provides an HSV vector comprising an envelope comprising one or more mutant gB and/or gH envelope glycoproteins, whereby the HSV vector exhibits at least 25% increased rate-of-entry after 20 minutes when assayed at 30° C. or 37° C. in Vero cells after first incubating at 4° C. relative to a control HSV comprising wild-type gB and gH glycoproteins. The invention also provides a viral stock comprising the inventive HSV vector.

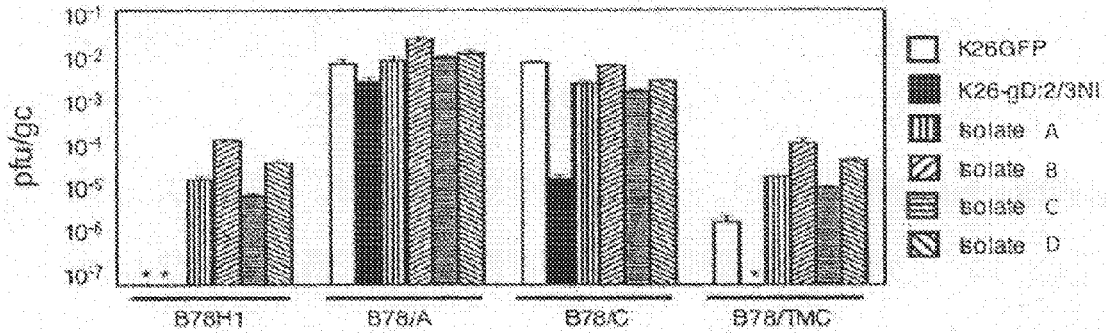


FIG. 1

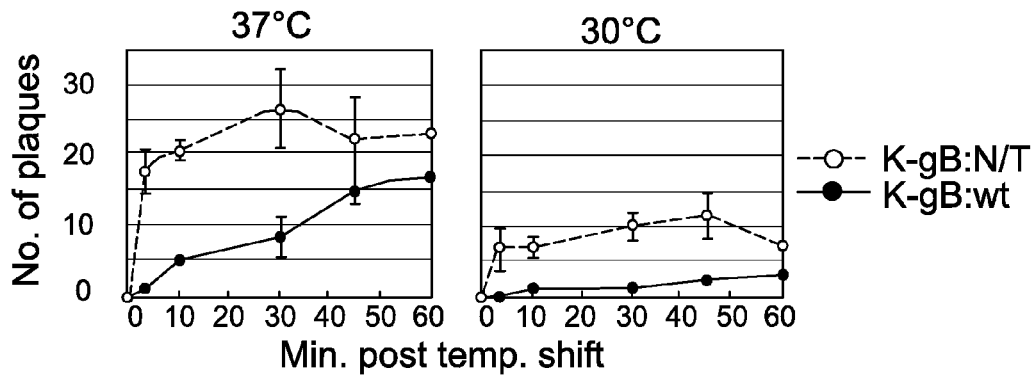


FIG. 2A

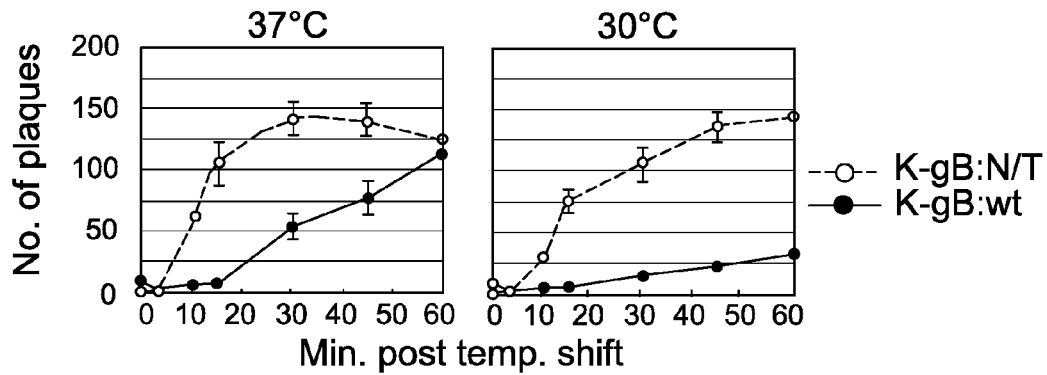


FIG. 2B

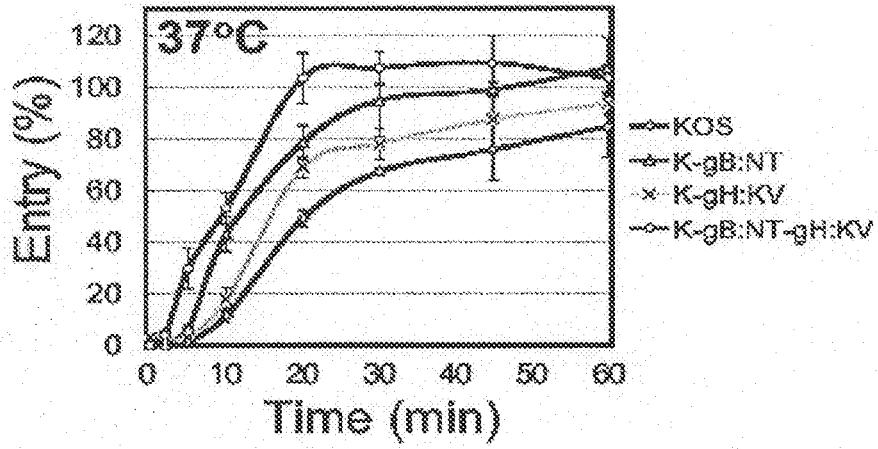


FIG. 3A

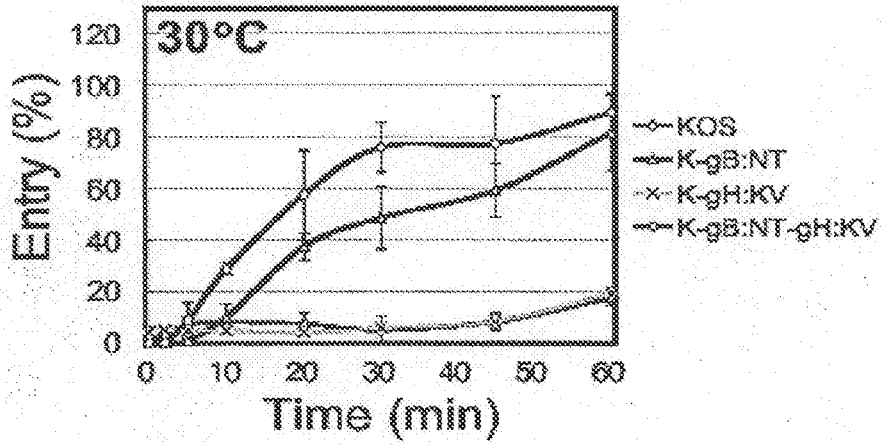


FIG. 3B

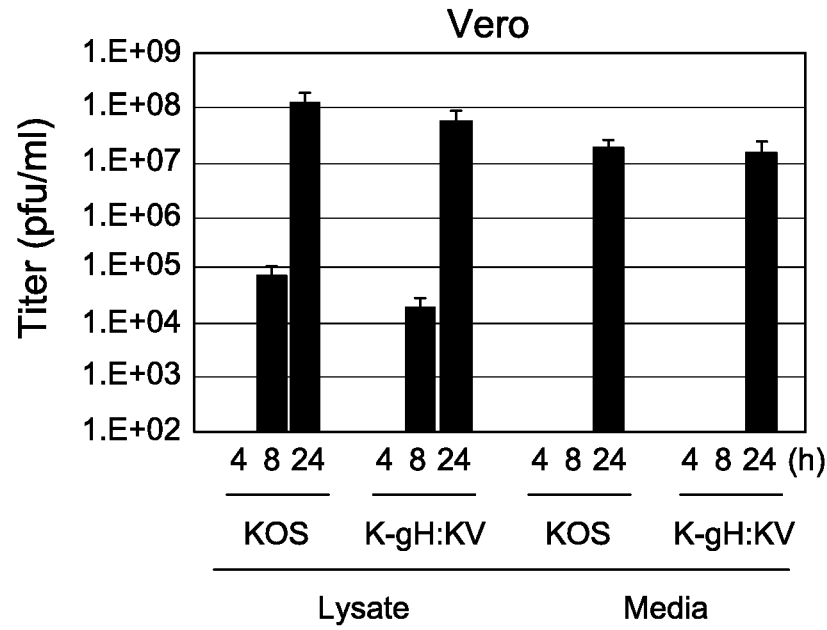


FIG. 4A

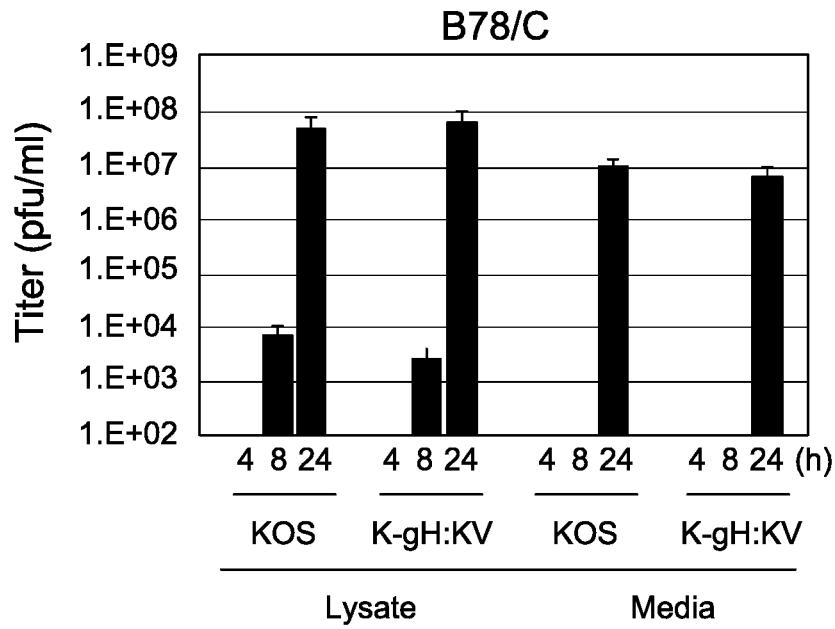


FIG. 4B

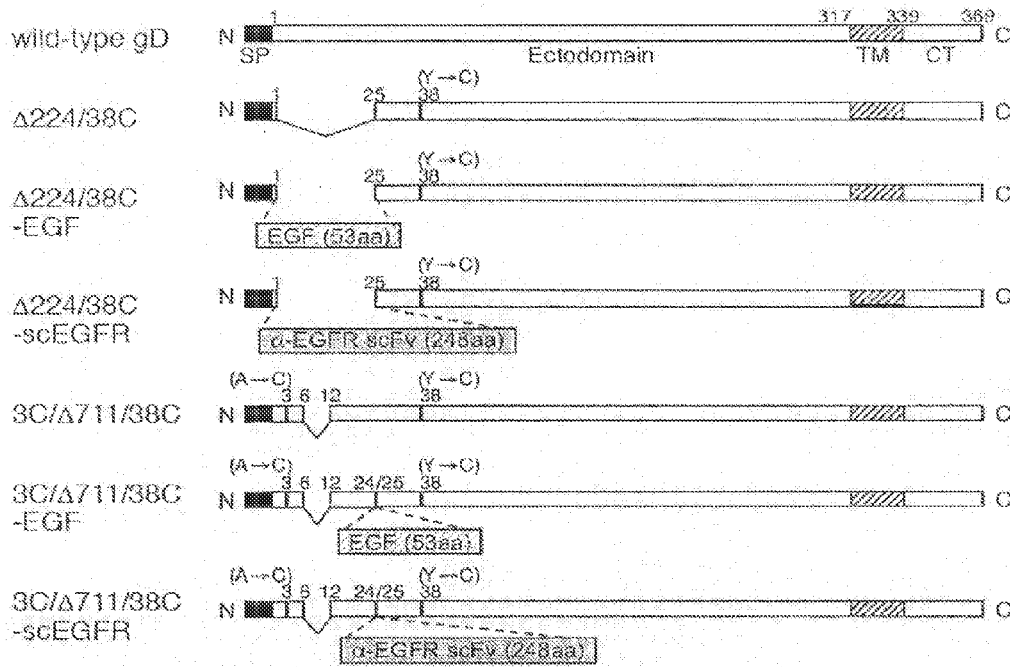


FIG. 5

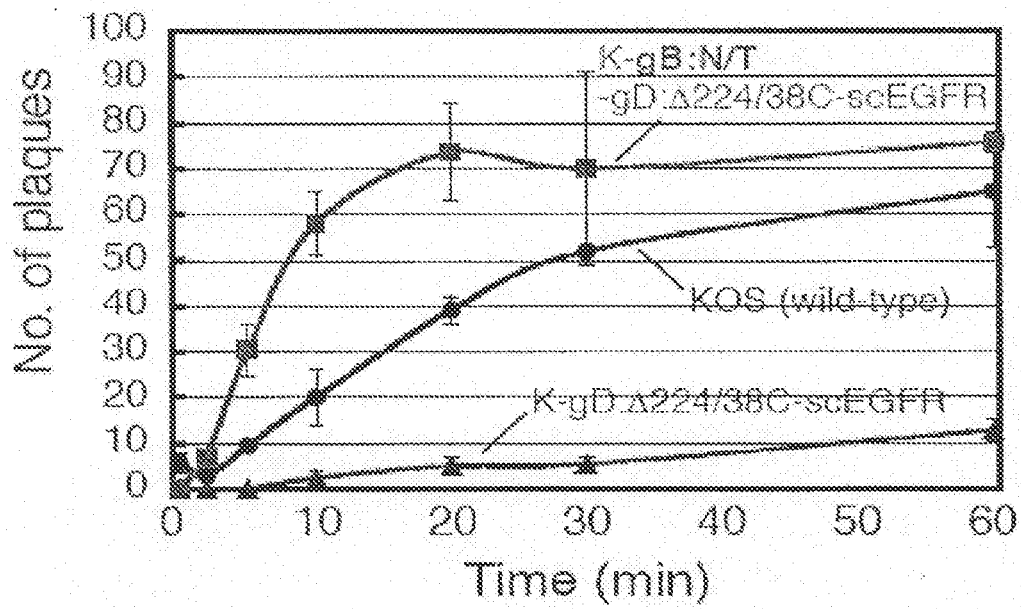


FIG. 6

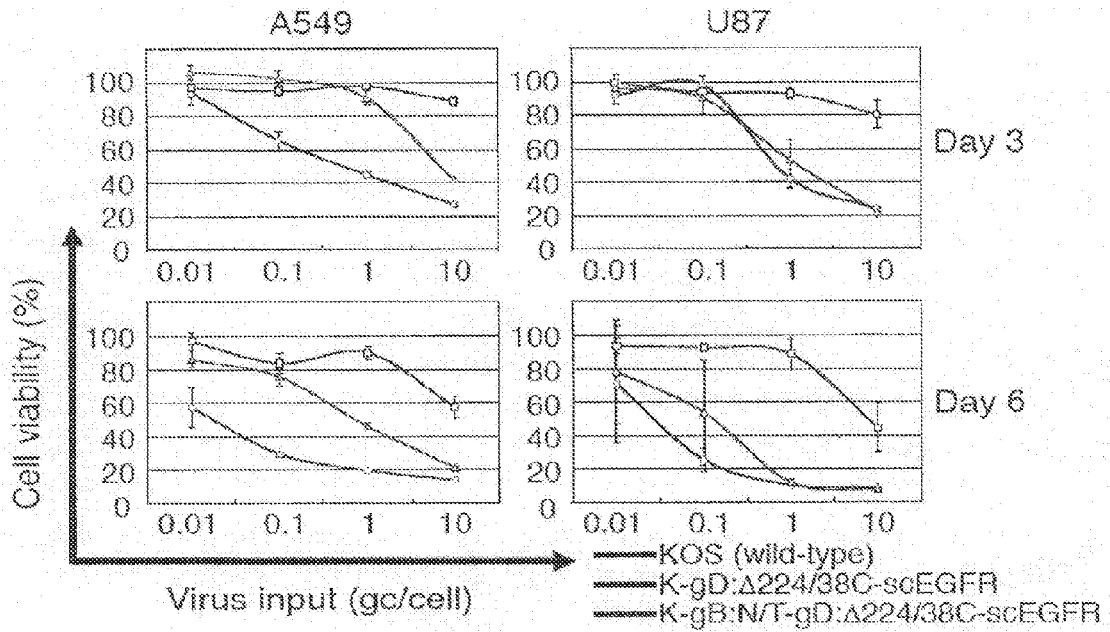


FIG. 7

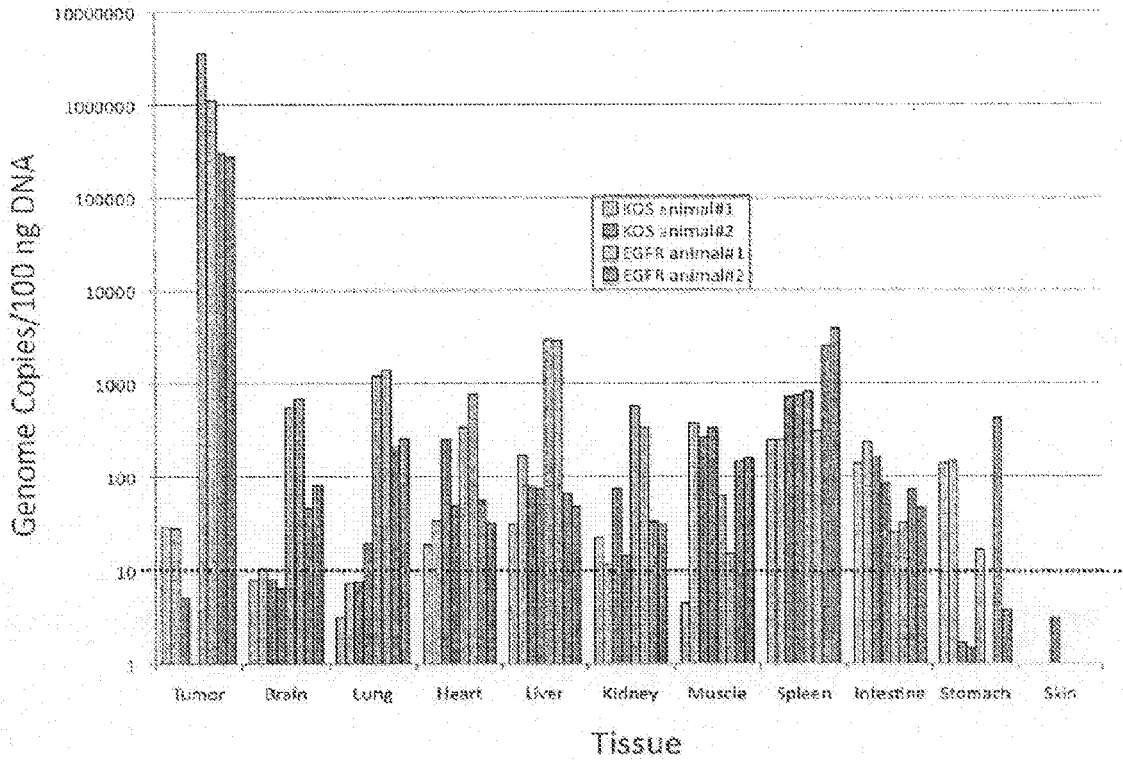


FIG. 8A

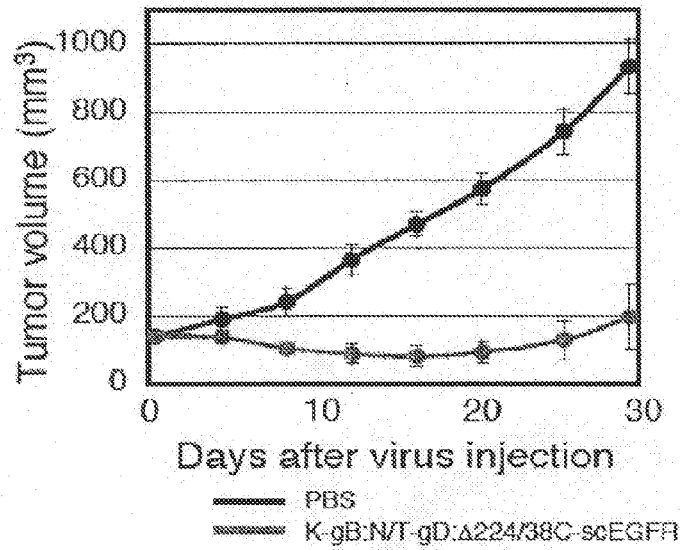


FIG. 8B

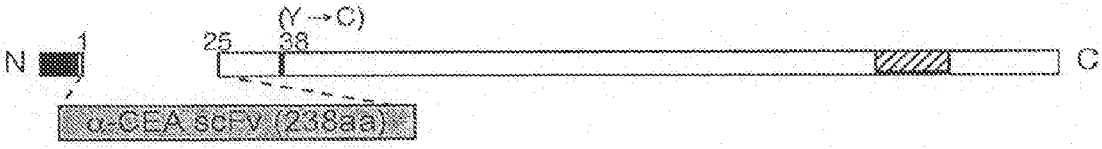


FIG. 9

**IDENTIFICATION OF MUTATIONS IN
HERPES SIMPLEX VIRUS ENVELOPE
GLYCOPROTEINS THAT ENABLE OR
ENHANCE VECTOR RETARGETING TO
NOVEL NON-HSV RECEPTORS**

CROSS-REFERENCE TO RELATED
APPLICATIONS

[0001] This patent application is a continuation of co-pending U.S. patent application 13/641,649, which is a U.S. National Phase of International Patent Application No. PCT/US2011/032923, filed Apr. 18, 2011, which claims the benefit of U.S. Provisional Patent Application No. 61/325,137, filed Apr. 16, 2010, each of which is incorporated by reference.

STATEMENT REGARDING FEDERALLY
SPONSORED RESEARCH AND
DEVELOPMENT

[0002] This invention was made with Government support under Grant Numbers CA119298, NS40923, and DK044935 awarded by the National Institutes of Health. The Government has certain rights in this invention.

[0003] Incorporated by reference in its entirety herein is a computer-readable nucleotide/amino acid sequence listing submitted concurrently herewith and identified as follows: One 2,809 Byte ASCII [Text] file named “ 723867 ST25.TXT,” created on Apr. 25, 2016.

BACKGROUND OF THE INVENTION

[0004] In recent years, the potential of viral vectors or genetically engineered viruses for the treatment of a variety of human diseases has been a topic of intense study worldwide. Herpes simplex virus (HSV) is among the most promising platforms for these purposes because of its efficient entry and spread into a wide range of cell types and its ability to accommodate expression cassettes for multiple or very large foreign genes that can provide therapeutic functions.

[0005] Targeting of HSV infection to specific cells for the delivery of therapeutic products or lytic infection of cancer cells requires (i) elimination of the native ability of the virus to interact with its entry receptors, mainly nectin-1 and HVEM, and (ii) the availability of a mechanism to trigger the virus entry process in response to virus engagement of alternate receptors. The attachment and fusion steps of HSV infection are mediated primarily by components of the viral envelope, a membranous structure containing at least 10 glycoproteins (gB, gC, gD, gE, gG, gH, gI, gJ, gL, and gM) and four non-glycosylated integral membrane proteins (UL20, UL34, UL45, and UL49.5). Of the glycoproteins, gB, gD, gH, and gL are essential for wild type herpes viruses to infect their host cells, while the remainder are dispensable for viral attachment or internalization. Prior to HSV-1 entry, virions are adsorbed to the cell surface through binding of gC and gB, to exposed glycosaminoglycans on the cell membrane. The entry process is then initiated by the interaction of gD with one of its cognate receptors, such as herpesvirus entry mediator (HVEM) or nectin-1. Receptor binding results in a conformational change in gD triggering activation of gB and a fourth envelope glycoprotein, gH, as the effectors of fusion between the viral envelope and cell membranes.

[0006] The virus can also infect cells by moving transcellularly, (e.g., at the sites of gap junctions), a process referred to as lateral spread. The process of lateral spread to neighboring cells also involves the envelope proteins; however different proteins appear to be essential for each process. Thus, for example, while gE, and gI are not essential for primary infection at the cell surface, removal of either of these greatly inhibits lateral spread.

[0007] Based on this understanding of the HSV-1 cell attachment and entry process, gC and gD have been modified to eliminate recognition of their natural receptors (“de-targeting”) and insert a targeting element to provide a novel interaction with specific receptors on the target cell (“retargeting”). Although these approaches have shown promising results in terms of ablation of virus entry through the natural receptors, the efficiency of retargeted entry has not been universally high, thus limiting the practical application of these vectors. In fact, there has been only one example in the literature of efficient HSV-1 retargeting (Menotti et al., *J. Virol.*, 82(20), 10153-61 (2008); Menotti et al., *PNAS USA*, 106(22) 9039-44 (2009)), and some attempts to take advantage of this design (replacement of residues 61-218 of gD with a single-chain antibody [scFv] against HER-2) to target the EGF receptor (EGFR) using an EGFR-specific scFv, have been unsuccessful.

[0008] It is clear, therefore, that a methodology is needed to enhance retargeted virus entry and spread, as such can reduce the effective virus dose and thereby increase safety.

BRIEF SUMMARY OF THE INVENTION

[0009] The invention provides modified HSV vectors that exhibit enhanced entry of cells, either through direct infection and/or lateral spread. In one aspect, HSV vectors of the present invention can directly infect cells through interaction with cell proteins other than typical mediators of HSV infection (e.g., other than nectin-1, HVEM, heparan sulfate/chondroitin sulfate proteoglycans. In another aspect, the invention provides an HSV vector, such as comprising mutant gH glycoproteins, which HSV vector exhibits lateral spread in cells typically resistant to HSV lateral spread, such as cells lacking gD receptors.

[0010] In yet another aspect, the invention provides an HSV vector comprising an envelope having one or more mutant envelope proteins, whereby said HSV vector exhibits at least 25% increased rate-of-entry after 20 minutes when assayed at either 30° C. or 37° C. in Vero cells after first incubating at 4° C. relative to an HSV comprising a wild-type gB and/or gH protein.

[0011] In another aspect, the invention provides an HSV vector comprising a mutant gB and/or a mutant gH glycoprotein, wherein the HSV comprises mutations at two or more of group of residues consisting of gB:D285, gB:A549, gB:S668, gH:N753, and gH:A778, wherein said mutations are relative to the sequence of HSV-1 strain KOS derivative K26GFP or GenBank Accession No. AF311740 or GenBank Accession No. X03896.

[0012] In a further aspect, the invention provides an HSV vector comprising an envelope having one or more mutant envelope proteins other than gD or gC, whereby said HSV vector infects a cell via interaction of gD and/or gC with a cell surface protein other than or in addition to known gD or gC receptors such as nectin-1, HVEM, and heparan sulfate/chondroitin sulfate proteoglycans.

[0013] In still another aspect, the invention provides a viral stock comprising an HSV vector as described herein.

[0014] In another aspect, the invention provides a DNA molecule encoding an HSV vector as described herein. In particular, the invention provides a DNA molecule comprising a sequence of nucleic acids encoding a mutant gB glycoprotein having a mutation at one or more of the following residues: gB:D285, gB:A549, and/or gB:S668, wherein the mutation in gB is relative to the sequence of HSV-1 strain KOS derivative K26GFP or GenBank Accession No. AF311740, as well as a DNA molecule comprising a sequence of nucleic acids encoding a mutant gH glycoprotein having a mutation at one or more of the following residues: gH:N753 and/or gH:A778, wherein the mutation in gH is relative to the sequence of HSV-1 strain KOS derivative K26GFP or GenBank Accession No. X03896.

[0015] The invention provides a method of increasing the efficiency of viral entry of a re-targeted HSV vector comprising (a) retargeting the HSV vector by mutating a gC and/or gD envelope glycoprotein to comprise a non-native ligand specific for a cell surface receptor, and (b) mutating an envelope glycoprotein other than gD such that the resulting vector can enter a cell via the interaction between said non-native ligand and the cell surface receptor at least 10 times more efficiently than a control HSV vector comprising the non-native ligand of (a) but lacking the mutated envelope glycoprotein of (b). Optionally, the gC and/or gD envelope glycoprotein is impaired for binding to its natural receptor or is deleted.

[0016] In another aspect, the invention provides a method of killing a cancer cell comprising contacting the cancer cell with an HSV vector as described herein.

BRIEF DESCRIPTION OF THE SEVERAL VIEWS OF THE DRAWING(S)

[0017] FIG. 1 depicts plaque-forming activities per viral genome for isolates 1-4, parent virus K26-gD:2/3NI, and control K26GFP on B78H1 cells and derivatives expressing intact HSV entry receptors (HVEM, B78/A; nectin-1, B78/C) or a debilitated receptor (mutant nectin-1, B78/TMC). Biological titers of the virus stocks in pfu/ml were determined on each cell line by standard procedures. Genome titers of the stocks in gc (genome copies)/ml were determined by qPCR for the viral ICP47 gene. Biological titers were divided by genome titers and the mean values \pm SD from 3 determinations plotted on a logarithmic scale. *, <10⁻⁷.

[0018] FIG. 2A is a time course of virus entry into B78/C cells. Cells were incubated with 200 pfu of K-gB:wt or K-gB:N/T at 4° C. for 30 min, washed thoroughly, incubated at 37 or 30° C. for the indicated times, and treated with acidic buffer. Cells were then incubated at 37° C. under methylcellulose-containing media for 3 days to allow plaque formation. Plaques were counted and the mean values \pm SD from 3 determinations plotted.

[0019] FIG. 2B is a time course of virus entry into Vero cells. Cells were incubated with 200 pfu of K-gB:wt or K-gB:N/T at 4° C. for 30 min, washed thoroughly, incubated at 37 or 30° C. for the indicated times, and treated with acidic buffer. Cells were then incubated at 37° C. under methylcellulose-containing media for 3 days to allow plaque formation. Plaques were counted and the mean values \pm SD from 3 determinations plotted.

[0020] FIG. 3A and FIG. 3B is a time course of virus entry into Vero cells comparing wild-type HSV-1 KOS with derivatives containing a mutant gB (gB:N/T) and/or gH allele (gH:N753K/A778V). Cells were incubated with 500 pfu of each virus at 4° C. for 30 min, washed thoroughly, incubated at (FIG. 3A) 37° C. or (FIG. 3B) 30° C. for the indicated times, and treated with acidic buffer. Cells were then incubated at 37° C. under methylcellulose-containing media for 2 days to allow plaque formation. Plaque numbers were counted and divided by the number of plaques formed by the same virus incubated for 2 h at 37° C. without acid treatment to calculate % entry. Mean values \pm SD from triplicate samples were plotted.

[0021] FIG. 4A depicts virus yields over time in lysates versus media for Vero cells infected at an MOI of 3 for 1 h followed by acid treatment and incubation at 37° C. with fresh media. Cell lysates and media were collected at 4, 8, and 24 h post-infection (pi) and titered on Vero cells. Viruses were wild-type HSV-1 KOS and derivative K-gH:KV carrying the gH:N753K/A778V mutant allele.

[0022] FIG. 4B depicts virus yields over time in lysates versus media for B78/C cells infected at an MOI of 3 for 1 h followed by acid treatment and incubation at 37° C. with fresh media. Cell lysates and media were collected at 4, 8, and 24 h post-infection (pi) and titered on Vero cells. Viruses were wild-type HSV-1 KOS and derivative K-gH:KV carrying the gH:N753K/A778V mutant allele.

[0023] FIG. 5 provides schematic representation of detargeted and retargeted gD-mutant constructs. Abbreviations: SP, signal peptide; TM, transmembrane domain; CT, cytoplasmic tail; aa, amino acids.

[0024] FIG. 6 depicts a time course of virus entry into gD-complementing Vero cells (VD60) as measured by plaque formation at 2 dpi. Cells were incubated with 20,000 gc of wild-type KOS, K-gD: Δ 224/38C-scEGFR, or K-gB:N/T-gD: Δ 224/38C-scEGFR at 4° C. for 30 min, washed thoroughly, incubated at 37° C. for the indicated times, and treated with acidic buffer. Cells were then incubated at 37° C. under methylcellulose-containing media for 2 days to allow plaque formation. Plaques were counted and the mean values \pm SD from 3 determinations plotted.

[0025] FIG. 7 depicts results of viability assays of cells infected with wild-type KOS, K-gD: Δ 224/38C-scEGFR, or K-gB:N/T-gD: Δ 224/38C-scEGFR. A549 or U87 cells were infected at 0.01-10 gc/cell for 3 or 6 days and cell viability relative to uninfected cells was determined by MTT assay. Data points are the means \pm SD of 6 replicates.

[0026] FIG. 8A depicts vector biodistribution results after in vivo administration of KOS or K-gB:NT-gD:A224/38C-scEGFR. U87 flank tumors in nude mice were allowed to grow to 700-1,000 mm³ in size, and 5 \times 10⁸ gc of KOS or K-gB:NT-gD:A224/38C-scEGFR were administered by tail-vein injection (n=2/virus). All animals were sacrificed 2 days later, and tumors and various organs were collected for DNA isolation and qPCR for the viral ICP47 gene. Virus load in the different tissues was calculated as gc/100 ng total DNA.

[0027] FIG. 8B depicts a plot of tumor size over time for U87 cells injected into the flanks of nude mice, with administration of K-gB:NT-gD:A224/38C-scEGFR or PBS as a negative control when tumor volumes reached 140 mm³ (day 0). ANOVA analysis showed that the difference between the two groups was statistically significant (P<0.0001).

[0028] FIG. 9 provides a schematic representation of a gD mutant construct retargeted to CEA by an anti-CEA scFv insertion.

DETAILED DESCRIPTION OF THE INVENTION

[0029] The present invention relates to the surprising discovery that particular changes in HSV envelope proteins such as gH and gB can dramatically affect the kinetics of infection, such as efficiency of infection, rates of entry, and lateral spread of HSV among cells. In one embodiment, the invention provides an HSV vector comprising mutant gH glycoproteins, whereby said HSV vector exhibits lateral, i.e., “cell-to-cell” spread in cells lacking gD receptors.

[0030] The inventive vector can be an HSV-1 vector or an HSV-2 vector, but preferably is an HSV-1 vector. The vector can be derived from a wild-type HSV strain or from a laboratory strain (e.g., KOS) or mutant strain. In this context, the vector can be said to be “derived from” a strain by virtue of the mutagenesis of the vector being described with reference to the strain.

[0031] Typically, the mutant entry protein within the inventive HSV vector is a glycoprotein involved with viral entry, such as gB, gH, and the mutant HSV vector can comprise mutated versions of both. However, the mutant entry protein can be any protein effecting entry of the HSV vector into cells. In preferred embodiments, the mutant entry protein is other than gD, although the HSV vector can additionally comprise a mutant gD, such as containing a ligand or other desired mutation.

[0032] Preferred mutations of gB or gH glycoprotein for use in the inventive HSV vector occur at one or more of the following residues: gB:D285, gB:A549, gB:S668, gH:N753, and gH:A778. More preferably, the inventive HSV vector comprises mutations at both gB:D285 and gB:A549, at both gH:N753 and gH:A778, and/or at each of gB:S668, gH:N753, and gH:A778. More preferably, the HSV vector contains two or more of such mutations (e.g., 3 or more, 4 or more), and the inventive HSV vector can comprise mutations in all five of these residues. A preferred HSV vector has mutations at gB:285, gB:549, gH:753, and gH:778.

[0033] The mutations are referred to herein relative to the codon (amino acid) numbering of the gD, gB, and gH genes of the HSV-1 strain KOS derivative K26GFP. The sequences for gB and gH of K26GFP differ from the sequences disclosed in GenBank #AF311740 (incorporated herein by reference) for gB and GenBank #X03896 (incorporated herein by reference) for gH as reflected in the following table:

TABLE 1

	Amino acid position	K26GFP		Nucleotide position(s)	K26GFP	
		AF311740	AF311740		AF311740	AF311740
gB	313	T	S	938-939	ACG	AGC
	315	A	T	943	GCC	ACC
	515	H	R	1,544	CAC	CGC

TABLE 1-continued

	Amino acid position	K26GFP		Nucleotide position(s)	K26GFP	
		X03896	X03896		X03896	X03896
gH	12	I	L	1,011	ATT	CTT
	110	P	S	1,305	CCG	TCG
	127	T	I	1,357	ACC	ATC
	138	S	A	1,389	TCG	GCG
	150	A	T	1,425	GCC	ACC
	532	A	A	2,573	GCT	GCG
	633	R	R	2,876	CGT	CGC

However, K26GFP may contain additional differences in the region of the gene corresponding to nucleotides 2,079-2,102 of GenBank X03896. Thus, it will be understood that the sequence of either KOS derivative K26GFP or GenBank Accession No. AF311740 can serve as a reference sequence for the gB mutations discussed herein. Also, the sequence of either KOS derivative K26GFP or GenBank Accession No. X03896 can serve as a reference sequence for the gH mutations discussed herein. However, the invention includes homologous mutations in gB and gH of any HSV strain.

[0034] Typically, the mutation of the entry protein for inclusion in the inventive HSV vector is a substitution mutation; however, the invention is not limited to substitution mutants. Especially preferred mutant gB or gH glycoproteins for use in the inventive HSV vector are selected from the group of substitution mutations consisting of gB:D285N, gB:A549T, gB:S668N, gH:N753K, gH:A778V. Preferably, the inventive HSV vector includes combinations of these substitutions (such as two or more of such substitutions (e.g., 3 or more, 4 or more, or all)), with the gB:D285N/gB:A549T double mutant, the gH:N753K/gH:A778V double mutant, and the gB:S668N/gH:N753K/gH:A778V triple mutant being preferred embodiments. gB:D285N/gB:A549T/gH:N753K/gH:A778V is the most preferred combination.

[0035] Efficiency of infection of a virus, such as an HSV vector of the present invention, reflects the number of viral particles required to infect a host cell, i.e., to produce a plaque. Efficiency of infection can be measured by any method deemed suitable by one of ordinary skill in the art, such as those described in the Examples provided herein. See also Uchida et al., *J. Virol.* 83: 2951-61 (2010). Efficiency of infection of an HSV vector of the present invention can be expressed as a ratio of plaques to total virus particles. In a preferred embodiment, the ratio is desirably as close to 1:1 (plaques to total virus particles) as possible, with infection efficiency optimized by maximizing the presence of active particles within a virus stock. For example, preferred vectors have a 1:100, 1:10, 1:5, or 1:3 infection rate. One of ordinary skill in the art will readily be able to consider the number or percentage of active particles as compared to total number of particles (“genome copy” or “gc” number). In other preferred embodiments, efficiency of infection of a retargeted HSV vector of the present invention is greater than that of a retargeted control HSV vector having a wild-type gB or gH protein. It will be understood that a sample of HSV vector used in testing efficiency of infection, whether a wild-type HSV or mutant HSV vectors of the present invention, desirably includes both active and inactive virus particles, and calculations of efficiency most appropriately are prepared based on numbers of active virus particles rather than on total (active and inactive) virus particles.

[0036] Certain HSV vectors in accordance with the present invention exhibit increased rate-of-entry relative to a control vector. Rate-of-entry reflects the amount of time at which the virus becomes resistant to inactivation by acidic wash of the cells, and can be measured by any method known to one of ordinary skill in the art, such as those described in the Examples provided herein. See also Uchida et al., *J. Virol.* 83: 2951-61 (2010). Another method for determining rate of entry is measurement of ICP4 expression at 6-8 hours post-infection. In particular, rate-of-entry assays of the present HSV vectors are typically carried out by incubating Vero cells with HSV vectors at 4° C. for 30 minutes, and then shifted to 30 or 37° C. for various intervals, such as 2, 3, 5, 10, 15, 20, 30, 40, 45, 50, 60, 120, or 180 minutes, followed by acidic wash. One of ordinary skill in the art will understand that rate-of-entry assays for other vectors will necessarily be conducted in suitable cells having appropriate receptors. An appropriate control vector is a retargeted HSV vector that has a wild-type gB or gH protein. The resulting cultures are overlaid with methylcellulose-containing media and incubated for an interval such as 48 hours before counting plaques. In other preferred embodiments, rate of entry of a retargeted HSV vector of the present invention is greater than that of a retargeted control HSV vector having a wild-type gB or gH protein. For example, the rate of entry can be increased by 10%, 15%, 20%, 25%, 30%, 35%, 40%, 45%, 50% or more than 50% as compared with wild-type HSV. Exemplary vectors in accordance with the present invention, thus, exhibit at least 25% increased rate-of-entry after 20 minutes when assayed at either 30° C. or 37° C. in Vero cells after first incubating at 4° C. relative to a wild-type HSV.

[0037] HSV vectors of the present invention can enter cells either by direct infection or by lateral spread and, in some embodiments, the inventive HSV can infect and/or spread to cells normally resistant to HSV infection. In preferred embodiments, HSV vectors of the present invention are capable of both direct entry and lateral spread, although in some embodiments, the vectors may have similar capacity or increased capability for one type of entry (i.e., direct vs. lateral) as compared to a wild type HSV, with similar or decreased capability for the other type of entry.

[0038] The inventive HSV vector desirably is able to enter a cell, whether by lateral spread or otherwise, normally resistant to HSV entry. In certain embodiments, the inventive HSV vector can directly infect a cell via interaction with nectin-2, nectin-3, nectin-4 or one or more other non-HSV receptors. For example, an HSV vector can infect a cell via interaction of gD, and preferably via interaction of gD and gC with a cell surface protein other than or in addition to nectin-1, HVEM, and heparin sulfate/chondroitin sulfate proteoglycans. In such HSV vectors, the inventive HSV vectors can comprise a viral envelope having one or more mutant envelope proteins other than gD or gC. In other embodiments, the inventive HSV vector exhibits lateral spread in cells lacking gD receptors. Mutant forms of gH, for example as described herein, can be incorporated into such HSV to effect such enhanced lateral spread ability.

[0039] In addition to having the mutant entry protein or proteins, the inventive HSV also can include a non-native ligand specific for a protein or other suitable binding site present at the surface of a predetermined cell type. To contact the cell, the ligand preferably is attached to the surface of the HSV virion, such as by incorporation into a

viral envelope protein or glycoprotein (such as gC, gD, and the like). This can be achieved by expression as a recombinant fusion protein, for example a fusion with a HSV surface protein or glycoprotein containing the ligand, or by chemical crosslinking of the ligand to the virion or by the establishment of high-affinity biochemical interaction of the virus envelope with the ligand, for example mediated through biotin-avidin binding.

[0040] The ligand can be any suitable agent that binds the surface of the predetermined cell. The ligand typically is proteinaceous and can constitute a natural binding partner for a cell surface protein (e.g., EGF), a portion of an antibody (e.g., a single chain antibody (scFv), a single domain antibody (VHH), or other ligand), or other binding agent. Where the predetermined cell is a cancer cell, a ligand can target a protein present on the cancer cell. For example, the cancer cell can display a receptor such as EGFR, EGFRvIII, CEA, and C1C-3/annexin-2/MMP-2, and the ligand can target such a receptor, i.e., the ligand can be capable of specifically binding such protein. The cell can be any contemplated cancer cell, although in preferred embodiments, the cancer cell is a lung epithelial carcinoma cell, a colon adenocarcinoma cell, a pancreatic adenocarcinoma cell, a glioblastoma cell, an astrogloma cell, a vulvar epithelial carcinoma cell, or a breast carcinoma cell. Preferably, the cancer cell is in a mammal, such as a human.

[0041] Replacement of a portion of gD (such as of residues 61-218) with a scFv targeting a receptor such as HER-2 (also referred to as neu or erbB-2) can serve as a ligand for targeting certain cancer cells (those overexpressing HER-2). Similarly, a scFv or other ligand, binding to the tumor-specific marker carcino-embryonic antigen (CEA) or the tumor-associated EGFR can be employed and insertion sites in gD can be between residues 1 and 25 or between residues 24 and 25. Further information concerning the ligand, as well as engineering HSV vectors containing ligands, is discussed in international patent publication WO 1999/006583, the disclosure of which is incorporated herein by reference. When expressed as a fusion with an envelope protein, scFvs or VHHs are generally preferred over other types of ligands. scFvs and VHHs that exclusively recognize mutant versions of the EGFR, such as an internally deleted version called EGFRvIII, are preferred targeting ligands. EGFRvIII and other mutant EGFR versions are specifically expressed on cancer cells and not on normal cells. EGFRvIII-specific antibodies, scFvs and VHHs have been described in the literature (Kuan et al., *Int. J. Cancer*, 88, 962-69 (2000); Wickstrand et al., *Cancer Res.*, 55(14): 3140-8 (1995); Omidfar et al., *Tumor Biology*, 25:296-305 (2004)).

[0042] In addition to having the mutant entry protein and the ligand, the inventive HSV vector can be further modified from a wild-type HSV. For example, in some embodiments, the inventive HSV vector can be used as an oncolytic virus. For such application, the HSV vector genome can be modified similarly as HSV vectors currently under investigation as oncolytic vectors. Also, the genome of the inventive vector can be engineered to contain microRNA target sequences, such as miR21, miR124, and/or miR128, which can be employed to achieve preferential HSV replication in tumor cells (see Lee et al., *Clin. Cancer Res.*, 15(16), 5126-35 (2009); Edge et al., *Mol. Ther.*, 16(8), 1437-43 (2008); Caewood et al., *Plos Pathogens*, 5(5), e1000440 (2009)). In this respect, control of virus replication by

cellular microRNAs can be achieved by insertion of microRNA target sequences into untranslated regions of essential viral genes. MicroRNA recognition of the targeted viral mRNA causes degradation of that viral mRNA (or blocks its translation). Thus the virus will not be produced in normal cells that contain the regulatory microRNA, but will be produced in (e.g.) tumor cells that do not contain the microRNA. Alternatively, the genome can be rendered replication incompetent and engineered to express one or more transgenes (see, e.g., U.S. Pat. Nos. 5,804,413 and 7,531,167, which are incorporated herein by reference), which can encode proteins or polypeptides or biologically-active RNAs (such as microRNA, interfering RNA, etc.). Accordingly, genome of the inventive HSV vector, whether replication-competent (oncolytic) or replication-defective, can comprise one or more exogenous expression cassettes (i.e., containing encoding-sequences in operable linkage with promoters, enhancers, and other suitable regulatory elements), such as encoding a transgene expressing marker (such as green fluorescent protein), an agent that enhances tumor killing activity (such as TRAIL or TNF), or other therapeutically-important gene product.

[0043] Further, the inventive HSV vector can have one or more viral envelope glycoproteins impaired for binding to its natural receptor. In some embodiments, one or more viral envelope glycoproteins can be deleted altogether. In preferred embodiments, the viral envelope glycoprotein that is impaired or deleted is gC or gD.

[0044] The inventive HSV vector can be made by any suitable method, which are known to those of ordinary skill in the art. Typically, the inventive HSV vector will be constructed using recombinant DNA technology, whereby a gene encoding the mutant entry protein replaces the corresponding wild-type (or source) copy of the entry protein gene. Accordingly, HSV vectors according to the invention having a mutant gB and/or gH protein have a gene encoding the mutant gB and/or gH protein, respectively, and lack a gene encoding wild-type gB and/or gH, respectively.

[0045] To facilitate the manufacture of the inventive HSV vector, the invention provides a DNA molecule comprising a sequence of nucleic acids encoding a mutant entry protein suitable for inclusion into the inventive HSV vector. For example, the DNA molecule can encode any mutant gB glycoprotein described herein, such as having a mutation at one or more of the following residues: gB:D285, gB:A549, and/or gB:S668 (such as gB:D285N, gB:A549T, and/or gB:S668N). Similarly, the DNA molecule can encode a mutant gH glycoprotein as described herein, such as having a sequence of nucleic acids encoding a mutant gH glycoprotein having a mutation at one or more of the following residues: gH:N753 and/or gH:A778 (such as gH:N753K and/or gH:A778V).

[0046] The DNA molecule can be in any suitable form, such as a plasmid, cosmid, or other construct. The DNA molecule can also include other sequences suitable for propagation (ori sites), expression (e.g., promoters, enhancers, IRES sites and other regulatory sequences) or engineering (e.g., cassettes encoding toxins, markers or tags, restriction enzyme recognition sites, etc.).

[0047] The genetic constructs, and the HSV vectors, of the present invention can be constructed using standard techniques. For example, a relatively new technique is manipulation of the HSV genome in bacteria as bacterial artificial chromosomes (BACs) (see, e.g., Gierash et al., *J. Virol.*

Meth., 135, 197-206 (2006)). That the entire HSV genome is published (see, e.g., GenBank #X14112 (strain 17), and portions from other strains are similarly published (e.g., GenBank #AF311740 for gB and #X03896 for gH), further facilitates the construction of the inventive HSV vectors and genetic constructs.

[0048] Generally, the inventive HSV vector is most useful when enough of the virus can be delivered to a cell population to ensure that the cells are confronted with a suitable number of viruses. Thus, the present invention provides a stock, preferably a homogeneous stock, comprising the inventive HSV vector. The preparation and analysis of HSV stocks is well known in the art. For example, a viral stock can be manufactured in roller bottles containing cells transduced with the HSV vector. The viral stock can then be purified on a continuous nycodenz gradient, and aliquotted and stored until needed. Viral stocks vary considerably in titer, depending largely on viral genotype and the protocol and cell lines used to prepare them. Preferably, such a stock has a viral titer of at least about 10^5 plaque-forming units (pfu), such as at least about 10^6 pfu or even more preferably at least about 10^7 pfu. In still more preferred embodiments, the titer can be at least about 10^8 pfu, or at least about 10^9 pfu, and high titer stocks of at least about 10^{10} pfu or at least about 10^{11} pfu are most preferred. Such titers are established using cells that express the targeted receptor.

[0049] The invention additionally provides a composition comprising the HSV vector and a carrier, preferably a physiologically-acceptable carrier. The carrier of the composition can be any suitable carrier for the vector. The carrier typically will be liquid, but also can be solid, or a combination of liquid and solid components. The carrier desirably is a pharmaceutically acceptable (e.g., a physiologically or pharmacologically acceptable) carrier (e.g., excipient or diluent). Pharmaceutically acceptable carriers are well known and are readily available. The choice of carrier will be determined, at least in part, by the particular vector and the particular method used to administer the composition. The composition can further comprise any other suitable components, especially for enhancing the stability of the composition and/or its end-use. Accordingly, there is a wide variety of suitable formulations of the composition of the invention. The following formulations and methods are merely exemplary and are in no way limiting.

[0050] Formulations suitable for parenteral administration include aqueous and non-aqueous, isotonic sterile injection solutions, which can contain anti-oxidants, buffers, bacteriostats, and solutes that render the formulation isotonic with the blood of the intended recipient, and aqueous and non-aqueous sterile suspensions that can include suspending agents, solubilizers, thickening agents, stabilizers, and preservatives. The formulations can be presented in unit-dose or multi-dose sealed containers, such as ampules and vials, and can be stored in a freeze-dried (lyophilized) condition requiring only the addition of a sterile liquid excipient, for example, water, for injections, immediately prior to use. Extemporaneous injection solutions and suspensions can be prepared from sterile powders, granules, and tablets of the kind previously described.

[0051] In addition, the composition can comprise additional therapeutic or biologically-active agents. For example, therapeutic factors useful in the treatment of a particular indication can be present. Factors that control inflammation, such as ibuprofen or steroids, can be part of

the composition to reduce swelling and inflammation associated with *in vivo* administration of the vector and physiological distress. Immune system suppressors can be administered with the composition method to reduce any immune response to the vector itself or associated with a disorder. Alternatively, immune enhancers can be included in the composition to upregulate the body's natural defenses against disease. Antibiotics, *i.e.*, microbicides and fungicides, can be present to reduce the risk of infection associated with gene transfer procedures and other disorders.

[0052] HSV vectors and compositions as described herein can be used in methods of killing a cancer cell. In such methods, an HSV vector or composition as described herein is applied to a cancer cell that has been removed from or is present in an organism, such as a mouse, rat, rabbit, cat, dog, pig, cow, chicken, monkey, or human, using methods known to one of ordinary skill in the art. In some exemplary embodiments, the cancer cell is a lung epithelial carcinoma cell, a colon adenocarcinoma cell, a pancreatic adenocarcinoma cell, a glioblastoma cell, an astrogloma cell, a vulvar epithelial carcinoma cell, or a breast carcinoma cell.

[0053] For treating cancer cells *in vivo*, a preferred embodiment of the inventive HSV comprises mutations in gB and/or gH as described herein, whereby efficient entry of the vector into tumor cells is achieved. Furthermore, such vectors additionally desirably comprises a targeting ligand as described to alter the HSV tropism to target cancer cells preferentially. The use of a cancer-specific ligand can facilitate treatment of disseminated cancer and systemic delivery of the HSV, although for treating solid tumors, intratumoral delivery, such as stereotactic injection, can be employed. For example, Examples 13 and 14 reveal preferential tumor targeting using EGFR- and CEA-specific ligands, but other tumor antigens can be similarly employed. Such an HSV further can comprise microRNA target sequences to facilitate preferential replication in cancer/tumor cells. The HSV thus can home to tumor/cancer cells preferentially, minimizing infection of non-targeted cells, enter the tumor/cancer cells efficiently, and preferentially replicate in tumor/cancer cells as opposed to healthy cells. Furthermore, such an HSV can be engineered to express an anti-cancer/tumor factor in tumors to further effect killing of the cancerous/tumor cells *in vivo*. Additionally, a replication-defective HSV can be engineered to target other types of cells to efficiently and cell-specifically deliver therapeutic genes for other diseases.

[0054] The following examples further illustrate the invention but, of course, should not be construed as in any way limiting its scope.

EXAMPLE 1

[0055] This example describes the identification of a hyperactive gB-mutant, gB:D285N/A549T ("gB:N/T") through use of various cell lines modified for receptivity to HSV infection.

[0056] Baby hamster kidney J1.1-2 and murine melanoma B78H1 cells (as described in *J Virol* 83, 2951-2961) have been shown to be resistant to HSV infection due to the absence of gD receptors (*J Virol* 72, 9992-10002; *J Virol* 76, 2424-2433; *Mol Ther* 3, 160-168). A mutant version of nectin-1, QN76-77AA/M85F, that is severely impaired for binding to gD and thus fails to support HSV entry, was previously described by Struyf *et al.* (*J Virol* 76, 12940-12950) and is referred to here as TMC (Triply Mutated

HveC). Clonal TMC-expressing J and B78 cell lines were created by stable transfection and designated J/TMC and B78/TMC. J/TMC and B78/TMC cells were established by transfection of J1.1-2 or B78H1 cells with plasmid pcDNA3TMC and selection for resistance to 0.4 mg/ml or 0.8 mg/ml G418, respectively. The TMC expression plasmid pcDNA3TMC was created by replacement of a V-domain-encoding fragment of pBG38 (*Science* 280, 1618-1620) with the corresponding fragment of pTMC153-his (*J Virol* 80, 138-148). Clonal lines obtained by limiting dilution or cylinder cloning methods were confirmed for expression of the introduced receptor cDNAs in >95% of the cells by indirect immunofluorescence.

[0057] J/TMCΔC cells were established by transfection of J1.1-2 cells with plasmid pcDNA3TMCΔC and selection with 0.4 mg/ml G418. Plasmid pcDNA3TMCΔC, encoding TMC deleted for both C-domains, was created by deleting the coding sequences for nectin-1 codons 148 to 336 from pcDNA3TMC.

[0058] The virus mutant K26-gD:R222N/F223I (*J Virol* 83, 2951-2961; *Virology* 360, 477-491), abbreviated here as K26-gD:2/3NI, is a mutant of K26GFP (*J Virol* 72, 7563-7568) and has a highly diminished ability to use nectin-1 for infection due to a pair of mutations in gD, but is largely unimpaired for infection through HVEM; it expresses a VP26-GFP fusion protein (*J Virol* 72, 7563-7568) facilitating the detection of virus infection and growth. K26-gD:2/3NI was challenged for growth on J/TMC or B78/TMC cells by reiterative high-MOI infection and progeny amplification on HVEM-expressing J (J/A) cells.

[0059] Two separate selections were carried out. In the first, J/TMC cells were inoculated with K26-gD:2/3NI at 1,000 pfu/cell and rinsed after 8 h with acidic buffer (Table 1, Exp 1). Progeny virus harvested 2 d later from the cells and medium was expanded on J/A cells for infection of J/TMC cells at 100 pfu/cell, followed by acid treatment at 8 h. Progeny virus was harvested as before and used for plaque purification by limiting dilution on J/TMC cells. The second selection (Table 2, Exp 2) was performed in a similar manner with the following modifications. B78/TMC cells were inoculated with the same initial virus at 100 pfu/cell followed by expansion on J/A cells, progeny virus was passaged twice more on B78/TMC cells and once on J/TMCΔC cells. Plaque purifications were performed on B78/TMC cells.

[0060] Following the above selections, virus was isolated from a number of individual J/TMC and B78/TMC plaques, purified, and characterized. Direct sequencing was used to identify mutations in the gD gene of seven isolates derived from the first experiment and eight from the second. As shown in Table 1, 10 of the 15 isolates had one or two new missense mutations in the gD ORF in addition to the parental 2/3NI mutations. Distinct amino acid substitutions were found in isolates from the first (A185T) and second selection (Q178H), and one isolate contained both substitutions. However, five of the seven isolates from the first experiment harbored no new gD mutations, suggesting that these viruses had undergone alterations outside the gD gene.

TABLE 1

gD mutations in selected virus isolates ^a .				
Group	Substitution (parental + new) ^b	New base change ^b	Frequency ^c	Isolate # ^d
Exp 1 (2 passages)				
1	R222N/F223I	—	5/7	A
2	R222N/F223I + A185T	GCC→ACC	2/7	B
Exp 2 (4 passages)				
3	R222N/F223I + Q178H	CAG→CAT	7/8	C
4	R222N/F223I + Q178H/A185T	CAG/GCC→CAT/ACC	1/8	D

^aK26-gD: 2/3NI was passaged twice or four times through TMC-expressing cells and progeny viruses were cloned by limiting dilution on J/A cells.

^bAmino acid or nucleotide changes in individual isolates.

^cNumber of isolates with the indicated mutation/total number of analyzed isolates in each experiment.

^dDesignation of representative isolate from each of the groups.

[0061] One representative isolate from each of the four gD-mutant groups (Table 1) was purified by repeated limiting dilution on J/A cells. The isolates were amplified on J/A cells and their infection profiles established on B78 cells expressing HVEM (B78/A), nectin-1 (B78/C), TMC, or no gD receptor. Infections were performed with equal numbers of viral genome copies (gc) determined by real-time quantitative PCR (*J Virol* 76, 12940-12950). Control infections included K26-gD:2/3NI and its wild-type gD parent, K26GFP (*J Virol* 72, 7563-7568). Cells were infected for 8 h and expression of the tegument protein VP16 was visualized by indirect immunofluorescence rather than GFP fluorescence in these assays because the intensity of the GFP signal varied among the isolates and the parental viruses.

[0062] Neither K26GFP nor the restricted K26-gD:2/3NI virus showed infection of B78H1 cells even at 1,000 gc/cell, consistent with the absence of gD receptors on these cells. In agreement with previous findings (*J Virol* 83, 2951-2961), K26-gD:2/3NI showed substantially reduced infection of B78/C, but not B78/A cells compared to K26GFP. Infection of B78/TMC cells by K26GFP was observed only at the highest gc input, while infection by K26-gD:2/3NI was undetectable, thus validating the use of this virus-receptor combination for the selection of gain-of-function mutants. Isolate A showed a similar level of infection on B78/A cells as K26GFP and K26-gD:2/3NI. However, although this isolate had the same gD ORF as K26-gD:2/3NI, it infected B78/C cells with an efficiency similar to that of wild-type gD virus rather than at the much lower level observed with K26-gD:2/3NI. This unanticipated result indicated that other virus glycoproteins involved in the entry process had been altered. On B78/TMC cells, isolate A showed a dramatic increase in infectious activity over its parent, as expected, but also greater activity than K26GFP. Surprisingly, unlike K26GFP and K26-gD:2/3NI, isolate A was capable of infecting unmodified B78H1 cells, suggesting the acquisition of mutations that render infection independent of known gD receptors. ICP4 staining at 6 h post-infection (hpi) showed essentially the same trend, indicating that the changes in isolate A principally facilitated virus entry rather than replication.

[0063] To quantify these results and identify potential differences between isolate A and the gD-altered isolates B-D, the plaque-forming activities of the four isolates and the two control viruses on the panel of B78 cell lines were compared. The results of triplicate titrations of each virus on

each cell line, expressed as plaque-forming units per genome copy (pfu/gc) (FIG. 1), mirrored those of the single-round infection assays for isolate A. Thus, all four isolates showed increased plaque formation on B78/C cells compared to their K26-gD:2/3NI parent virus. Unlike the parent virus, all four formed plaques on B78/TMC and B78H1 cells. In addition, the shared A185T substitution in gD of isolates B and D appeared to have a general enhancing effect on plaque formation, consistent with a previous report that A185T increases the efficiency of viral cell-to-cell spread in a gD receptor-independent manner (*J Virol* 74, 11437-11446).

[0064] Together, these results indicated that the four isolates had similar mutations outside the gD gene and that the identified mutations in gD were not the primary cause of the acquired ability of these viruses to grow on B78/TMC and B78H1 cells. Furthermore, it is noteworthy that the specific infectious activities (pfu/gc) of the four isolates were very similar on B78/TMC and B78H1 cells, indicating that the impaired gD receptor TMC did not play a key role in the original selection of these isolates.

[0065] Direct sequencing revealed that each of the four isolates harbored the same two missense mutations in the gB ORF: D285N and A549T. The gH and gL ORFs of isolate A, were also sequenced, with the exception of an extremely GC-rich 20-nucleotide portion of gH (positions 1983-2102 in GenBank accession number X03896). No changes were found in either gene.

[0066] These results show that the double missense mutation in gB, referred to hereafter as N/T, was most likely responsible for the acquired phenotypes of the selected isolates.

EXAMPLE 2

[0067] This example characterizes functional changes caused by the N/T mutation as they relate to the infectious properties of the virus, particularly viral entry via proteins other than nectin-1.

[0068] To confirm that new gD mutations in isolates B-D were not responsible for the extended tropism of these viruses, the cloned gD gene of each isolate was expressed and evaluated to determine whether incorporation of its product into a gD-null virus would mimic the changes in host-cell range observed with the complete isolate. The results of these transient complementation assays, conducted as described in *J Virol* 74, 2481-2487, showed that none of

the newly acquired mutations in the gD genes of isolates B-D substantially altered virus infection of any of the four cell lines. Notably, the mutant gD alleles yielded no detectable infection of B78/TMC cells although two of them were isolated following selection on these cells. Furthermore, the acquired mutations showed minimal suppression on B78/C cells of the nectin-1-specific defect caused by the parental 2/3NI mutations. These results supported the suggestion that the gain-of-function phenotypes of the different isolates were principally the result of changes outside the gD ORF.

[0069] Next, to evaluate the effects of the N/T mutations, a gB-null virus, KΔT (*J Virol* 61, 714-721), was rescued by homologous recombination with wild-type and N/T-mutant gB plasmids and plaque purification on non-complementing Vero cells (African green monkey kidney cells). Vero cells were co-transfected with KΔT (*J Virol* 61, 714-721) viral DNA and plasmids pgB1:wt or pgB1:D285N/A549T, followed by plaque purification through three rounds of limiting dilution on Vero cells. Isolates designated K-gB:wt and K-gB:N/T (K-gB:N/T), respectively, were confirmed by DNA sequencing through the entire gB and gD ORFs. Plasmid pgB1:wt contains the gB ORF and flanking regulatory sequences from K26GFP (*J Virol* 72, 7563-7568); mutant counterparts, including pgB1:D285N/A549T, were created by replacement of appropriate fragments of pgB1:wt with the corresponding fragments of PCR products generated on DNA from selected virus isolates.

[0070] Because gB contributes to virus attachment to cells by binding to glycosaminoglycans ("GAGs") on the cell surface, gD receptor-deficient CHO-K1 cells and their GAG-deficient derivative pgsA-745 cells (*Proc Natl Acad Sci USA* 82, 3197-3201) were used to determine whether enhanced infection by gB:N/T was dependent on GAG binding. At 8 hpi, K-gB:N/T produced readily detectable infection of CHO-K1 cells at a virus input of 100 or more gc/cell, whereas no infection by K-gB:wt was seen at a 10-fold higher dose and limited infection at a 100-fold higher dose. At 24 hpi, K-gB:N/T produced foci of infected CHO-K1 cells, indicative of direct cell-to-cell spread, while a 100-fold higher dose of K-gB:wt yielded only individual infected cells and very small foci. On GAG-deficient pgsA-745 cells, infection by K-gB:wt was barely detectable even at 24 hpi at the highest virus input. In contrast, infected cells were distinguishable at a 100-fold lower dose of K-gB:N/T at both 8 and 24 hpi. Together, these results demonstrated that gB:N/T enables infection of gD receptor-negative cells and indicated that this effect was not due to increased binding of gB to GAGs. Using a direct assay for virion attachment, gB:N/T mutations did not enhance GAG-dependent or GAG-independent virus adsorption to cells.

[0071] Given the absence of known gD receptors on CHO-K1 cells (*Cell* 87, 427-436), K-gB:N/T was analyzed to determine whether gD is required for the enhanced infection of these cells. A gD-null virus was derived from K-gB:N/T, designated K-gB:N/TΔgD, by replacement of the complete gD ORF with that of EGFP. CHO-K1 cells were infected with 1,000 gc/cell of K-gB:N/T or K-gB:N/TΔgD and stained for VP16 at 16 hpi. The results showed that gD is indispensable for infection of CHO-K1 cells by K-gB:N/T. The requirement for gD in K-gB:N/T infection of CHO-K1 cells raised the possibility that these cells express minor or cryptic gD receptors on their surface that can serve as HSV-1 entry receptors conditional to the presence of the gB:N/T double mutation. Nectin-3 was considered as a

candidate based on a previous report by Cocchi et al. that nectin-3 can mediate entry of HSV harboring a particular combination of gD mutations (*J Virol* 78, 4720-4729). To perform an infection blocking assay, CHO-K1 cells were incubated with rat anti-mouse nectin-3 (Cell Sciences) or rat anti-mouse nectin-4 (R&D Systems) mAbs (both IgG2a) or PBS for 1 h at RT, and then infected with K-gB:N/T at 3,000 gc/cell for 2 h at 37° C. followed by acid treatment. Infections were assessed at 16 hpi as described above. The results showed that anti-nectin-3, but not isotype-matched anti-nectin-4, reduced infection by K-gB:N/T in a dose-dependent manner; phase-contrast images indicated that this was not due to anti-nectin-3-mediated cell detachment. These observations suggested that nectin-3 plays an essential role in gB:N/T mutant virus infection of CHO-K1 cells, most likely by functioning as a receptor for gD.

[0072] Indirect immunofluorescence was performed as described previously (*J Virol* 83, 2951-2961), using goat anti-mouse nectin-3 or nectin-4 polyclonal antibodies (R&D Systems) (1 μg/ml) as primary antibodies and Cy3-conjugated rabbit anti-goat IgG (Sigma) (1:400) as secondary antibody. Immunofluorescence analysis demonstrated the presence of nectin-3 on the surface of CHO-K1 cells.

[0073] Since nectin-3 appeared to enable K-gB:N/T infection of CHO-K1 cells, other nectin-family members were evaluated for this function. Increased infection by both K-gB:wt and K-gB:N/T was seen on CHO-K1 cells that overexpress human nectin-2 (CHO/Nec2) (*Virology* 246, 179-189) or nectin-4 (CHO/Nec4) compared to unmodified CHO-K1 cells, indicating that these nectins can act as HSV entry receptors, but infection was approximately 100-fold higher in each case for K-gB:N/T than for K-gB:wt; neither virus infected any of these cell lines as efficiently as they infected CHO-K1 cells expressing human nectin-1 (CHO/C (*Science* 280, 1618-1620)). These data indicated that gB:N/T facilitates the use of multiple members of the nectin family for viral entry, suggesting that the gB mutations act in a general manner to enhance virus infection through weak gD-receptor interactions. A similar effect was seen in a comparison of K-gB:wt and K-gB:N/T infection of B78/TMC cells where the gD binding-impaired TMC mutant of nectin-1 represented the weak receptor.

EXAMPLE 3

[0074] This example demonstrates accelerated viral rate of entry by the gB:N/T mutant allele.

[0075] Since mutations in gB have previously been shown to alter the kinetics of viral entry (*J Virol* 63, 730-738; *Virology* 122, 411-423; *Virology* 137, 185-190), rate-of-entry assays were performed to determine whether the gB:N/T mutations might act in this manner. Nectin-1-expressing cells (B78/C) were used for these experiments because these cells are susceptible to both the wild-type and the mutant virus after 24 h of virus/cell co-incubation. However, under those conditions these cells showed no clear difference in infection efficiencies between K-gB:wt and K-gB:N/T. B78/C cells were incubated with K-gB:wt or K-gB:N/T at 200 pfu per well at 4° C., washed thoroughly, incubated at 37° C. or 30° C. for 0-60 min, and extracellular virus was inactivated by low-pH treatment. The cells were then overlain with methylcellulose-containing media and incubated at 37° C. for 3 days to allow plaque formation. At 37° C., entry of gB:wt virus progressed steadily over time whereas entry of the mutant virus in the first 3 min exceeded

that of the wild-type virus in 60 min (FIG. 2A). However, following this initial phase of rapid entry by the mutant virus, additional entry was limited such that at 60 min nearly equal numbers of the two viruses had entered the cells. This observation indicated that the dramatic differences at the early time points reflected a difference in virus entry kinetics rather than in virus input. At 30° C., entry also proceeded more rapidly for K-gB:N/T than for K-gB:wt although the extent of entry was lower overall than at 37° C. These results demonstrated that the gB:N/T mutations accelerate virus entry via the natural gD receptor nectin-1.

[0076] HSV-1 entry into gD receptor-transduced B78 cells reportedly takes place by a low-pH-independent endocytic pathway (*J Virol* 79, 6655-6663), whereas entry into Vero cells occurs by membrane fusion at the cell surface (*Proc Natl Acad Sci USA* 84, 5454-5458; *J Virol* 63, 3435-3443); entry into receptor-transduced CHO-K1 cells is mediated by a low-pH-dependent endocytic pathway (*J Virol* 77, 5324-5332; *J Virol* 78, 7508-7517). To determine whether the gB:N/T mutations accelerate entry through each of these different pathways, the rate-of-entry assays were repeated on Vero and CHO/C cells. As shown in FIG. 2B, the results on Vero cells at 37° C. were similar to those on B78/C cells although both viruses showed a delay in early kinetics compared to B78/C cells. As on B78/C cells, the entry kinetics were slower at 30° C., but the 60 min entry level of K-gB:N/T was as high as the maximum reached at 37° C. Since CHO/C cells do not form well-defined plaques, the rates of entry on these cells were assessed by anti-VP16 staining at 8 h post acidic wash to visualize infected cells. B78/C cells were included for comparison. The entry kinetics of both viruses were similar on the two cell lines and consistent for B78/C cells with the results of FIG. 2A. K-gB:wt showed a gradual increase in infection, reaching a maximum at 30-60 min, while as little as 3 min sufficed for near-maximum infection by K-gB:N/T. These results demonstrated that the gB:N/T mutations accelerate virus entry into receptor-bearing cells regardless of the pathway used by wild-type virus.

[0077] Transiently complemented gB-null virus was used to determine whether the individual mutations of gB:N/T affected the rate of virus entry. Vero cells were transfected with expression plasmids for gB:N/T, gB:D285N, and gB:A549T, the cells were infected the next day with KΔT, and supernatants harvested the following day were used for rate-of-entry assays on B78/C and Vero cells.

[0078] Rate-of-entry assays were performed as described previously (*J Virol* 63, 730-738) with modifications. Cells were incubated with viruses at 4° C. for 30 or 60 min and washed three times with cold PBS. The cells were then shifted to 37 or 30° C. for various intervals followed by acid treatment. The cultures were incubated at 37° C. and stained for VP16 expression at 8 h (primary infection) or 48-72 h (plaque formation).

[0079] The results of this assay showed that entry was accelerated on both cell lines by either of the single mutant gBs compared to wild-type gB. The A549T version of gB displayed a somewhat greater effect than the D285N version, and the double mutant gB mediated slightly more entry in 10 min than either of the single mutants; these differences were clearer on Vero cells than on B78/C cells which was not surprising given the observation that the majority of K-gB:N/T virus entry into B78/C cells occurred in the first few minutes (FIG. 2A) while entry into Vero cells took place at

a slower pace (FIG. 2B). These results indicated that each of the gB:N/T mutations contributed, albeit unequally, to the phenotype of the double mutant protein.

EXAMPLE 4

[0080] This example demonstrates enhancement of retargeted HSV infection by the gB:N/T mutant allele.

[0081] HSV infection has been retargeted by ablation of the native receptor-recognition functions of gD and insertion of recognition elements for novel receptors (*Proc Natl Acad Sci USA* 103, 5508-5513; *J Virol* 82, 10153-10161; *Proc Natl Acad Sci USA* 106, 9039-9044). However, the efficiency of these retargeted infections has been reported to be lower than that of natural infection through authentic receptors. To determine whether efficiency was improved over retargeted HSVs containing gB:wt, gB:N/T was analyzed for its effect on targeted receptor-dependent and -independent ("off-target") infection. A gD-null derivative of K-gB:wt, designated K-gB:wtΔgD, was generated by replacement of the gD ORF with that of EGFP as done earlier to produce K-gB:N/TΔgD. Thus, K-gB:wtΔgD and K-gB:N/TΔgD were produced by co-transfection of VD60 cells with plasmid pAgD-EGFP and viral DNAs of K-gB:wt or K-gB:N/T, respectively, with subsequent purification of green-fluorescent plaques on VD60 cells.

[0082] Using equal amounts of these two gD-null viruses (pfu determined on gD-complementing VD60 cells as described in *J Virol* 62, 1486-1494), transient complementation assays were performed with a retargeted gD construct, pgD:3C/Δ711/38C-scEGFR, containing mutations that severely impair virus infection through nectin-1 (A3C/Y38C) (*J Virol* 79, 1282-1295, 2005; *J Virol* 83, 2951-2961, 2009,) and HVEM (deletion of residues 7-11), and an insertion specifying a single-chain antibody (scFv) directed against the epidermal growth factor receptor (EGFR) between residues 24 and 25. The retargeting plasmid pgD:3C/Δ711/38C-scEGFR was generated by insertion of the 528 scFv sequence (*Clin Cancer Res* 12, 4036-4042) into plasmid pgD:3C/Δ711/38C-NE (*J Virol* 79, 1282-1295).

[0083] The retargeted gD construct enabled infection exclusively of EGFR-transduced CHO-K1 cells (CHO/EGFR) by K-gB:N/TΔgD but not K-gB:wtΔgD, while the parental wild-type gD construct complemented both viruses for infection of CHO-K1 cells expressing the natural HSV receptors HVEM (CHO/A cells) or nectin-1 (CHO/C), but not for infection of CHO/EGFR cells.

[0084] As described earlier, entry of the gB:N/T virus into nectin-1-bearing cells was markedly accelerated compared to wild-type virus (K-gB:wt), suggesting that the gB:N/T double mutation affects a rate-limiting step in entry. The gB:N/T double mutation was combined with an EGFR-retargeted gD allele, gD:Δ224/38C-scEGFR, in a wild-type virus background. The resulting virus entered EGFR-transduced J1.1-2 cells (J/EGFR) that lack authentic HSV receptors approximately 100-fold more efficiently than the same virus lacking the gB double mutation. Furthermore, the double recombinant virus entered EGFR-transduced J1.1-2 cells at least 10,000-fold more efficiently than J1.1-2 cells transduced with the natural entry receptors, HVEM or nectin-1. Thus the gB double mutation increased the efficiency of retargeted infection without yielding significant "off-target" infection through the natural HSV entry receptors. In addition, the double recombinant virus entered a number of tumor cell lines expressing EGFR with similar

efficiencies as wild-type virus entering these lines via the natural receptors. On most of these cell lines as well, the retargeted virus lacking the gB double mutation showed approximately 100-fold less entry.

[0085] These results strongly suggested that gB:N/T can augment targeted receptor-dependent HSV infection without detectably increasing off-target infection and hence, that these mutations may prove beneficial for the efficient targeting of therapeutic HSV vectors.

EXAMPLE 5

[0086] This example provides a genetic selection approach to identify additional virus mutations to increase infection. Different from above, this selection uses the highly impaired gD receptor TMCAC derived from nectin-1 in combination with a wild-type gD virus instead of a mutant gD virus.

[0087] As described in Example 1, J/TMCAC cells are gD receptor-deficient J1.1-2 baby hamster kidney cells that stably express a severely debilitated version of the HSV entry receptor nectin-1, and which are used as a target for selection of complementing mutations. The defective receptor, J/TMCAC, has mutations in the nectin-1 variable (V) domain that reduce gD binding, and lacks the two constant (C) domains of nectin-1. Inoculation of J/TMCAC cells with K26GFP, a recombinant virus that expresses GFP as a fusion with VP26, yielded no green fluorescence even at an MOI of 1,000. To confirm that this was due to the absence of functional entry receptors, the cells were inoculated with a replication-defective HSV mutant, QOZHG, that expresses lacZ from the ICP0 IE promoter and GFP from the CMV IE promoter, and virus entry was assessed by X-gal staining at 24 hpi. No entry was detected on J/TMCAC cells, while almost 100% entry was observed at the same virus input (MOI=10) on J cells expressing wild-type nectin-1 (J/C). The same result was obtained by observation of GFP signals. These findings indicated that the J/TMCAC protein lacked any ability to function as an HSV entry receptor and thus could be a suitable target for the selection of complementing mutations.

[0088] J/TMCAC cells (twenty 10-cm dishes) were inoculated with K26GFP at an approximate MOI of 1,000 and rinsed with 0.1 M glycine (pH 3.0) (referred to hereafter as acidic wash) at 24 h post-infection (pi). Combined intracellular and extracellular virus harvested at 72 hpi (first-round product) was expanded on J/A cells for a second round of infection of J/TMCAC (twenty 10-cm dishes) at an MOI of approximately 1,000 and acidic wash at 24 hpi. Progeny virus was again harvested and expanded (second-round product). After two more rounds of selection at the same MOI and one round at an MOI of ~300, plaques were purified by limiting dilution on B78/TMC cells expressing full-length TMC. Selected isolates were analyzed by selective sequencing. All mutant sequences reported here were unambiguous, confirming the purity of the isolates and the absence of wild-type virus.

[0089] To identify genetic alterations responsible for the ability of the fifth-round products to enter and spread on J/TMCAC cells, 46 viruses were individually purified by limiting dilution and propagated for DNA extraction. Surprisingly, direct sequencing of the gD ORFs of these isolates demonstrated that only 16 (Nos. 31-46 in Table 2) harbored a missense mutation in this gene, while the remaining 30 (Nos. 1-30) showed no amino-acid changes in this region.

Among the 16 isolates with substitutions in gD, 12 had A185T (Nos. 31-42), 3 had S140K (Nos. 43-45), and 1 had S276L (No. 46). A185T and a different substitution at position 140 (S140N) have been described previously (10, 41).

TABLE 2

Mutations in selected virus isolates ^a				
No. ^b		gB ^d	gH ^e	gL ^e
1	wt	wt	N753K/A778V	wt
2	wt	S 668N	N753K/A778V*	
3	wt	Hinc(-)	N753K/A778V*	
4	wt	Hinc(+)	N753K/A778V*	
5	wt	Hinc(+)		
6	wt	Hinc(+)		
7	wt	Hinc(+)		
8	wt	Hinc(+)		
9	wt	Hinc(+)		
10	wt	Hinc(+)		
11	wt	Hinc(+)		
12	wt	Hinc(+)		
13	wt	Hinc(+)		
14	wt	Hinc(+)		
15	wt	Hinc(+)		
16	wt			
17	wt			
18	wt			
19	wt			
20	wt			
21	wt			
22	wt			
23	wt			
24	wt			
25	wt			
26	wt			
27	wt			
28	wt			
29	wt			
30	wt			
31	A185T	wt	N753K/A778V*	
32	A185T	S668N	A571T	
33	A185T	Hinc(-)		
34	A185T	Hinc(-)		
35	A185T	Hinc(-)		
36	A185T	Hinc(-)		
37	A185T	Hinc(+)		
38	A185T	Hinc(+)		
39	A185T	Hinc(+)		
40	A185T	Hinc(+)		
41	A185T	Hinc(+)		
42	A185T	Hinc(+)		
43	S140K	Hinc(+)		
44	S140K	Hinc(+)	N753K/A778V*	
45	S140K			
46	S276L	Hinc(+)	N753K1A778V*	

K26GFP was passaged five times through J/TMCAC cells and progeny viruses were plaque-purified.

^aIsolate numbers referred to in the text.

^bDirect sequencing was performed on the entire gD ORF. Amino acid substitutions are indicated. wt, no substitution.

^cResults of direct sequencing of the complete gB ORF or diagnostic HincII digestion of PCR amplicons. Amino acid substitutions are indicated. wt, no substitution. Hinc(-), absence of the diagnostic HincII site. Hinc(+), presence of the diagnostic HincII site. Blank, not tested.

^dResults of direct sequencing of the entire gH and gL ORFs (except for a highly GC-rich 24-nucleotide portion of gH) or *, a portion of the gH locus containing positions 753 and 778. Amino acid substitutions are indicated. wt, no substitution. Blank, not tested.

[0090] Since the majority of the virus isolates had no gD mutations, the gB ORFs of one gD:wt (No. 2) were compared with one gD:A185T isolate (No. 32). Direct sequencing revealed that both isolates had acquired an S668N substitution creating a new HincII recognition site in the gB gene. An additional 28 isolates (Nos. 1, 3-15, 31, 33-44, 46) were screened by HincII-digestion of PCR amplicons spanning the mutant position showing that 21 of these (Nos.

4-15, 37-44, 46) contained the new HincII recognition site. The complete gB ORFs of two of the seven HincII-negative isolates were sequenced, one harboring gD:A185T (No. 31) and the other containing wild-type gD (No. 1). No amino acid substitutions were found in either one. Thus, while 23 out of 30 isolates had acquired the gB:S668N substitution, suggesting a role for this mutation in the new phenotype of these isolates, at least one was unchanged in both its gD and gB ORFs.

[0091] To identify the change(s) in isolate No. 1 responsible for its ability to enter and form plaques on J/TMCAC cells, the ORFs in this isolate for the two other essential entry glycoproteins, gH and gL, were sequenced. While no mutations were found in the gL ORF, the nearly complete gH sequence revealed two amino-acid substitutions, N753K and A778V; this sequence excludes a highly GC-rich 24-nucleotide portion of gH that could not be read (positions 2079-2102 in GenBank accession number X03896). Isolates with identified gD and/or gB mutations were then analyzed to determine whether they contained either or both of these gH substitutions. Surprisingly, of 7 sequenced isolates, 6 had the same two substitutions (N753K/A778V; Nos. 2-4, 31, 44, 46), while one, harboring both gD:A185T and gB:S668N, showed an A571T substitution in gH (No. 32). These results, particularly the identification of one isolate (No. 1) that carried the gH:N753K/A778V double mutation as the only change in the four essential glycoprotein genes, strongly suggested that this double mutation had imparted the ability of a number of the isolates, perhaps the majority, to grow and form plaques on J/TMCAC cells.

EXAMPLE 6

[0092] This example demonstrates evaluation of entry into cells for recombinant viruses containing the gH:N753K/A778V and gH:S668N substitutions (referred to hereafter as gH:KV and gH:668N, respectively) separately or in combination.

[0093] To separate the gB:668N and gH:KV substitutions from potential other changes in the original isolates, each mutant allele was transferred into a wild-type virus background by standard homologous recombination to obtain recombinants named K-gB:668N and K-gH:KV, respectively. In addition, a double-recombinant virus, K-gB:668N-gH:KV, was established to identify potential combinatorial effects of the gB:668N and gH:KV alleles. Likewise, the double recombinant K-gB:NT-gH:KV was generated containing both the gB:N/T mutant allele described earlier and gH:KV. All of these recombinant viruses were confirmed by DNA sequencing through the entire gB, gD, and gH ORFs except for the highly GC-rich 24-nucleotide portion of gH mentioned earlier. The recombinants, along with wild-type KOS virus and K-gB:N/T described above (referred to here as K-gB:NT), were propagated simultaneously and titered on Vero cells.

[0094] K-gB:668N was established by co-transfection of Vero cells with KAT viral DNA and plasmid pgB1:S668N, followed by plaque purification through three rounds of limiting dilution on Vero cells. Plasmid pgB1:S668N was created by substitution of an S668N-containing gB fragment amplified on DNA from isolate No. 5 for the corresponding fragment of pgB1, a plasmid containing the gB open reading frame (ORF) and flanking regulatory sequences from K26GFP.

[0095] K-gH:KV, K-gB:668N-gH:KV, and K-gB:NT-gH:KV were established in two steps. First, KΔgH, K-gB:668NΔgH, and K-gB:NTΔgH were established by co-transfection of gH-complementing F6 cells with plasmid pΔgH-EGFP and viral DNA of KOS, K-gB:668N, or K-gB:NT, respectively, and purification of green plaques on F6 cells. Plasmid pΔgH-EGFP was created by replacing the sequence of the gH ectodomain and transmembrane region in pgH1:wt, a plasmid that contains the gH ORF and flanking regulatory sequences from KOS, with the EGFP ORF from pEGFP-C1 (Clontech). K-gH:KV, K-gB:668N-gH:KV, and K-gB:NT-gH:KV were then established by co-transfection of Vero cells with plasmid pgH1:N753K/A778V and viral DNA of KΔgH, K-gB:668NΔgH, or K-gB:NTΔgH, respectively, and plaque purification on Vero cells. Plasmid pgH1:N753K/A778V was created by substitution of an N753K/A778V-containing gH fragment amplified on DNA from virus isolate No. 1 for the corresponding fragment of pgH1:wt.

[0096] K-gH:KVΔgD, K-gB:668N-gH:KVΔgD, and K-gB:NT-gH:KVΔgD were produced by co-transfection of gD-complementing VD60 cells with plasmid pΔgD-EGFP and viral DNA of K-gH:KV, K-gB:668N-gH:KV, or K-gB:NT-gH:KV, respectively, followed by purification of green plaques on VD60 cells.

[0097] All recombinant viruses were confirmed by PCR and DNA sequencing through the relevant glycoprotein genes or deletions.

[0098] Entry assays were performed as described above for K-gB:NT.

[0099] As shown in Examples 2-3 above, K-gB:NT has the ability to enter CHO-K1 cells, a cell line like J1.1-2 and B78H1 that is resistant to HSV-1 due to the absence of gD receptors. Recombinant viruses harboring gB:668N or gH:KV were assayed to determine whether they shared this ability. Entry of K-gB:NT into CHO-K1 cells was detectable at an MOI of 3 or higher, whereas no entry was seen by wild-type KOS at an MOI of 30 and only limited entry at an MOI of 300. Both K-gB:668N and K-gH:KV reproducibly showed somewhat more entry than wild-type KOS, with K-gH:KV reaching a level that was approximately 10-fold below that of K-gB:NT. The double-recombinant K-gB:668N-gH:KV yielded at least 10-fold more entry than K-gB:668N or K-gH:KV, comparable to the level observed for K-gB:NT. Moreover, entry by the second double-recombinant virus, K-gB:NT-gH:KV, exceeded that not only of K-gH:KV, but also that of K-gB:NT. Importantly, all of the mutant viruses entered Vero cells to similar degrees as wild-type KOS, excluding the possibility that the observed differences in entry into CHO-K1 cells were due to viral input differences. Similar trends were recorded on gD-receptor-deficient B78H1 cells. Together, these results indicated that the gB:668N and gH:KV alleles possessed a limited ability to compensate for the absence of authentic gD receptors in virus entry and that gH:KV could act cooperatively with both gB:668N and gB:NT to enhance this ability.

[0100] As shown earlier, gB:N/T entry into gD-receptor-deficient CHO-K1 cells still requires gD. To determine if combinations of mutant gB and gH could eliminate the gD dependence of HSV entry, gD-null viruses were prepared from K-gB:668N-gH:KV and K-gB:NT-gH:KV, designated K-gB:668N-gH:KVΔgD and K-gB:NT-gH:KVΔgD, respectively, by replacement of the complete gD ORFs with that of GFP. Virus stocks were prepared by passage through Vero

cells to remove the complementing wild-type gD protein provided by VD60 cells. Since gD-null viruses cannot be titered on Vero cells, qPCR was used to determine the genome titers [genome copies (gc)/ml] of these viruses and their gD \pm counterparts. CHO-K1 cells were then inoculated with each of the viruses at 300 gc/cell and entry was visualized at 8 hpi by immunostaining for ICP4. No entry was observed with either of the gD-null recombinants, demonstrating that gD is indispensable for CHO-K1 infection even when the viruses carry combinations of entry-enhancing gB and gH alleles.

[0101] These results show that the gB and gH mutations, separately or together, facilitate gD-dependent virus entry into cells that lack authentic gD receptors. The mechanism may involve gD recognition of minor or cryptic gD receptor (s) expressed on the cells, such as nectin-3.

EXAMPLE 7

[0102] This example demonstrates rate of entry analyses for the K-gH:KV and K-gB:NT-gH:KV recombinant viruses compared to wild-type HSV-1 KOS.

[0103] As described at Example 3 above, gB:NT accelerates HSV entry into gD receptor-positive Vero cells. To determine whether the K-gH:KV mutation had a similar effect, Vero cells were incubated for 30 min at 4° C. with wild-type KOS or gD \pm mutant viruses at 500 pfu per well, washed thoroughly, incubated at 37 or 30° C. for 0-60 min, and extracellular virus was inactivated by low-pH treatment. The cells were then overlaid with methylcellulose-containing media and incubated at 37° C. for 2 days to allow plaque formation. Percent entry was calculated for each virus relative to the number of plaques produced by the same virus after infection for 2 h at 37° C., conditions that yielded approximately equal plaque numbers for all of the viruses. As can be seen in FIG. 3A-B, the double-recombinant K-gB:NT-gH:KV had the fastest entry kinetics at both temperatures, followed by K-gB:NT. At 37° C., KOS showed the slowest rate of entry, but at 30° C., no difference was observed between the dramatically reduced entry rates of KOS and K-gH:KV. In additional experiments, the entry kinetics of K-gB:668N was found to be similar to that of K-gH:KV at both temperatures. These observations paralleled the differences in entry seen on receptor-deficient cells, suggesting that those differences were also due to allele-specific increases in entry rates relative to KOS. It is evident that the absence of authentic gD receptors causes a general reduction in entry kinetics, and thus differences in the entry rates between the viruses affect the total levels of penetration on receptor-deficient cells for an extended period of time (e.g., 6 h as in the entry assays of Example 6) compared to Vero cells (about 1 h, FIG. 3A).

[0104] Together, these data support the likelihood that accelerated entry mediated by the new gB and gH alleles played a role in the selection of the original isolates on J/TMCAC cells.

EXAMPLE 8

[0105] This example demonstrates evaluation of lateral, or (cell-to-cell), virus spread into cells.

[0106] To analyze the role of gH mutations in lateral virus spread, donor cells (Vero or VD60) were infected at an MOI of 10 at 37° C. for 2 h to achieve infection of all cells. Viruses used in this experiment were KOS, K-gB:668N,

K-gB:NT, K-gH:KV, K-gB:668N-gH:KV, and K-gB:NT-gH:KV. Extracellular virus was then inactivated by acidic wash and the cells were incubated at 37° C. for 1 h, trypsinized, and suspended in fresh culture media. Equal numbers of infected (donor) cells were seeded onto monolayers of uninfected (acceptor) cells in a 48-well plate. After a 3-h incubation at 37° C., the cells were overlaid with methylcellulose-containing medium. Two or three days later, the overlay was removed, and the cells were fixed with 100% methanol and immunostained with monoclonal mouse anti-VP16 antibody (1:400) (Santa Cruz) and Cy3-conjugated sheep anti-mouse IgG (1:400).

[0107] Each of the viruses formed plaques on acceptor Vero cells and gD-receptor-transduced B78 cell lines (B78/A, B78/C), regardless of the nature of the gB and gH alleles, although the plaques formed by the three gH:KV-harboring viruses tended to be somewhat larger than the plaques formed by the other viruses. Surprisingly, however, the three viruses harboring gH:KV formed plaques on gD-receptor-negative B78 cells as well (B78/0G, containing a GFP gene controlled by the virus-inducible ICP0 promoter); observation of green fluorescence confirmed that these plaques consisted of infected acceptor cells rather than donor cells. Analysis at higher magnification showed very small green foci in the KOS, K-gB:668N, and K-gB:NT wells, consistent with a single round of virus spread from individual donor cells to their nearest neighbors without subsequent spread between acceptor cells. In contrast, plaques formed by the three gH:KV-harboring viruses showed several layers of fluorescent cells around a vacant space in the middle, indicative of initial virus spread from a central infected Vero cell to its immediate neighbors, followed by multiple rounds of spread from one gD-receptor-negative cell to the next. Similar results were obtained using CHO/0G cells, another gD-receptor-deficient line that expresses GFP in response to virus infection. These observations provided compelling evidence that the gH:KV double mutation enables spread between cells that lack authentic gD receptors. Since neither of the gB mutant alleles displayed a similar ability, this conclusion implies mechanistic differences and differential roles of gB and gH in entry of free virus and entry by cell-to-cell spread.

[0108] Next, to determine the requirement for gD in spread of the different gH:KV recombinant viruses on gD-receptor-deficient cells, gD-knockout versions of these viruses were assayed. Infectious center assays were performed as above except that the virus stocks were prepared on gD-complementing VD60 cells and VD60 cells were used as donor cells; plaque formation was recorded after 3 days. VP16 immunostaining showed that the gD-null viruses yielded only single-cell infections or very small foci on gD-receptor-deficient B78H1 cells or receptor-positive Vero cells, indicating that gD is required for cell-to-cell spread regardless of the presence or absence of gD receptors and spread- or entry-enhancing gB/gH mutant alleles in the viruses.

[0109] In view of the evidence above that gB:NT, gH:KV, and gB:668N, alone or in combinations, do not complement gD-null viruses in entry, these results demonstrate that the different mutant alleles do not confer a new gD-independent mechanism of virus entry from either the media or neighboring cells. Instead, each of these alleles likely acts by amplifying a weak signal from gD, resulting in effective execution of the fusion reaction.

EXAMPLE 9

[0110] This example demonstrates evaluation of the effect of gH:KV mutant gene on virus replication and egress.

[0111] To examine the possibility that increased virus replication, virion assembly or transport to the cytoplasmic membrane played a role in the increased lateral spread of K-gH:KV and/or the original selection of gH:KV-bearing viruses on J/TMCΔC cells, the replication and egress efficiency of K-gH:KV were compared with that of KOS. Vero cells were infected for 1 h at an MOI of 3, extracellular virions were inactivated by acidic wash, and viral titers in cell lysates and media at 4, 8, and 24 hpi were determined separately. As shown in FIG. 4A, the two viruses exhibited similar titers in both compartments at each of the selected time points. Similar results on B78/C cells (FIG. 4B) indicated that this outcome was not dependent on a specific cellular background. These observations argued that the spread-enhancing activity of gH:KV could not be attributed to increases in the efficiency of virus replication or egress.

[0112] Transfection of HSV-susceptible cells with the four essential glycoproteins, gB, gD, gH, and gL, causes cell-cell fusion, which is believed to reflect, at least in part, the normal functions of these glycoproteins and their receptors in HSV entry and spread (*J Virol* 72:873-5, 1998; *J Gen Virol* 81:2017-27, 2000; *Virology* 279:313-24, 2001). To examine the ability of gH:KV in combination with gB, gD, and gL to induce fusion of gD-receptor-deficient B78H1 cells, B78H1 cells were co-transfected with expression plasmids for gB (pCagB:wt), gD (pPEP99), gLpPEP101), and either gH:wt (pPEP100 or gH:KV (pCagH:KV), using Lipofectamine2000 (Invitrogen). Transfection of B78H1 cells with the four wild-type genes did not produce detectable cell fusion, in agreement with previous results demonstrating that a gD receptor is essential for HSV glycoprotein-mediated cell fusion (*Virology* 279:313-24, 2001). In contrast, replacement of the wild-type gH plasmid with the gH:KV version yielded readily detectable multinucleated cells indicative of cell-cell fusion. No syncytia were observed on transfection of the same cells with plasmids expressing gB:NT and wild type gD, gH, and gL.

[0113] These results indicate that gH:KV, but not gB:NT, facilitates a rate-limiting step in the fusion cascade leading to viral cell-to-cell spread. Together, the distinct properties of gB:NT and gH:KV indicate that these two alleles address separate rate-limiting steps controlling virus entry and lateral spread, respectively.

EXAMPLE 10

[0114] This example demonstrates that hyperactive glycoprotein B mutations augment fully retargeted HSV infection.

[0115] To retarget virus entry exclusively to epidermal growth factor receptor (EGFR)-bearing cells, gD residues essential for binding to the natural receptors were mutated or deleted, and EGF or an EGFR-specific single-chain antibody (scFv) were inserted near the amino terminus.

[0116] FIG. 5 illustrates modifications in the gD coding sequence designed to detarget HSV from its natural entry receptors and retarget the virus to EGFR. Detargeting mutations included a small (residues 7-11) or larger deletion (residues 2-24) in the HVEM-binding N-terminal region and one or two amino-acid substitutions (Y38C or A3C/Y38C) to ablate virus entry through nectin-1. To retarget these constructs, an scFv directed against EGFR (scEGFR) was

inserted in the 2-24 deletion or, as described in Example 4, between residues 24 and 25. In addition, constructs containing the EGF sequence at the same positions were also created.

[0117] To assess the complementing activity and specificity of the retargeted gD constructs of FIG. 5 (designated gD:Δ224/38C-EGF, gD:Δ224/38C-scEGFR, gD:3C/Δ711/38C-EGF, and gD:3C/Δ711/38C-scEGFR), transient complementation assays were performed using gD-null viruses that expressed either wild-type gB or the gB:NT mutant allele (K-gB:wtΔgD and K-gB:N/TΔgD described in Example 4). Vero cells were transfected with expression plasmids for the parental detargeted gD genes (gD:Δ224/38C and gD:3C/Δ711/38C, FIG. 5) or the retargeted gD genes and the cells were infected the next day with K-gB:wtΔgD or K-gB:N/TΔgD. Supernatants were harvested the following day and used to infect HSV-resistant baby hamster kidney J1.1-2 cells or J1.1-2 derivatives expressing HVEM (J/A), nectin-1 (J/C), or EGFR (J/EGFR). Results showed that the gD genes harboring the EGFR targeting sequences (EGF or scEGFR) allowed entry of the gB:NT/gD-null virus into J/EGFR cells, but entry of the gB:wt/gD-null virus into these cells was essentially undetectable. In addition, none of the mutant gD constructs allowed entry of either virus into J1.1-2, J/A, or J/C cells whereas the wt gD gene enabled entry of both viruses into J/A and J/C cells.

[0118] The same transiently complemented viruses were also tested on Vero cells commonly used for HSV propagation. These cells express simian EGFR endogenously as well as natural gD receptors. Similar to J/EGFR cells, both the EGF- and the scEGFR-retargeted gD genes allowed gB:NT-dependent gD-null virus entry into Vero cells, while no entry was observed in the absence of the EGFR-targeting ligands or by complemented gB:wt/gD-null virus. Unlike J/EGFR cells, however, Vero cells were also susceptible to both viruses complemented with gD:wt, allowing a direct comparison of the relative levels of normal and retargeted virus entry via their respective receptors. This comparison indicated that entry of the gB:NT/gD-null virus complemented with either of the two scEGFR-harboring gD alleles was almost as efficient as entry by gD:wt-complemented gD-null/gB:wt virus.

[0119] The scEGFR sequence was also inserted into a deletion of residues 61 through 218 in gD (gD:Δ61-218-scEGFR), a position used by Menotti and colleagues for the insertion of an anti-HER-2 scFv resulting in efficient virus retargeting to HER-2-expressing cells. Complementation of gB:NT/gD-null or gB:wt/gD-null viruses with the gD:Δ61-218-scEGFR construct did not yield detectable entry into J/EGFR cells or CHO/EGFR cells, another EGFR-transduced HSV-resistant cell line. Likewise, no entry was observed with EGF inserted into the 61-218 deletion.

[0120] Together, these results indicate that (i) the detargeting mutations in both types of constructs (gD:Δ224/38C and gD:3C/Δ711/38C) were effective; (ii) targeting was accomplished not only by scEGFR, but also by the natural receptor ligand, EGF; and (iii) the gB:NT allele raised the efficiency of retargeted infection to a level near that seen with a comparable wt virus entering via the natural HSV receptors. Further, the results imply that the 61-218-deleted version of gD does not represent a universally effective platform for gD retargeting by ligand insertion.

EXAMPLE 11

[0121] This example demonstrates efficiency, specificity, and kinetics of retargeted HSV entry.

[0122] The scEGFR-containing gD constructs were used to establish retargeted gB:wt and gB:NT recombinant viruses by homologous recombination with the corresponding gD-null viruses (K-gB:wtΔgD and K-gB:N/TΔgD) on gD-complementing VD60 cells. Recombinants were plaque-purified by multiple rounds of limiting dilution and finally passaged through non-complementing Vero cells to obtain virus preparations free of wild-type gD protein. Absolute virus titers expressed as genome copies (gc)/ml were determined by qPCR for the viral immediate early gene ICP47; these titers allow comparison of the entry efficiencies between viruses that differ in their recognition of entry receptors.

[0123] Fluorescence analysis showed that gB:NT recombinant viruses expressing either of the scEGFR-retargeted gD constructs entered J/EGFR cells efficiently, comparable to the entry of parental wt HSV-1 strain KOS into J/A or J/C cells that express authentic HSV receptors. In contrast, the gB:wt versions of these recombinants entered J/EGFR cells some 100-fold less efficiently. None of the retargeted viruses detectably entered into J1.1-2, J/A, or J/C cells even at high virus input (1,000 gc/cell), demonstrating that the detargeting mutations in the retargeted gD constructs were effective in abolishing virus entry via the natural HSV receptors. Similar results were obtained on CHO-K 1 cells and receptor-expressing derivatives. Consistent with these results, the gB:NT version of each of the scEGFR-retargeted viruses entered Vero cells as efficiently as wt KOS virus while the gB:wt versions showed limited entry only at high virus concentrations. Entry of the gB:NT version of the gD:Δ224/38C-scEGFR virus into Vero cells was confirmed to be EGFR dependent by pretreating the cells with anti-EGFR monoclonal antibody (mAb), resulting in a dose-dependent inhibition of entry without effect on entry of wt KOS virus.

[0124] As described above, the gB:NT allele accelerates HSV entry via normal and cryptic receptors, and thus it was of interest to compare the rate of entry of the gB:NT and gB:wt versions of the gD:Δ224/38C-scEGFR virus. Briefly, Vero-derived gD-complementing VD60 cells were infected for 0-60 min, extracellular virus was removed, and plaques were counted 2 d later; the use of VD60 cells eliminates differences in gD-dependent lateral virus spread following the initial entry of extracellular virus and thus minimizes differences in the rate of plaque formation by intracellular viruses expressing different gD genes. Wild-type KOS entered VD60 cells gradually over 60 min while the gB:wt version of the retargeted virus entered at a highly reduced rate (FIG. 6). However, the retargeted virus expressing the gB:NT allele entered VD60 cells more rapidly not only than the gB:wt version, but also than wt KOS virus, reaching a plateau value at approximately 20 min.

[0125] These results demonstrate that the gB:NT allele dramatically increases the kinetics of retargeted virus entry via a target receptor that bears no relationship to any known common or cryptic HSV receptors.

EXAMPLE 12

[0126] This example demonstrates retargeted virus infection and killing of human tumor lines.

[0127] Entry and cell-killing abilities of the gD:Δ224/38C-scEGFR viruses and KOS were compared on a panel of HSV-permissive human tumor lines known to express EGFR, including lung carcinoma A549, colon carcinoma HT29, pancreatic carcinoma BxPC3, glioblastomas U87 and SNB 19, and epidermoid carcinoma A431. Inoculation at 10 gc/cell yielded readily detectable entry of the gB:NT version of the retargeted virus, but only minimal entry of the gB:wt version. KOS virus entered each of these cell lines at a similar efficiency as the retargeted gB:NT virus, as observed earlier with Vero cells (FIG. 6). To confirm the receptor specificity of the retargeted virus on HSV-susceptible human cells, HT29 cells were treated with anti-EGFR mAb prior to infection. Dose-dependent inhibition of entry of the retargeted gB:NT virus, but not KOS, was observed.

[0128] To assess the oncolytic potential of these retargeted gB:wt and gB:NT viruses, A549 and U87 cells were infected with increasing amounts of the viruses and cell viability was determined by MTT assay at 3 or 6 days post-infection. As shown in FIG. 7, the retargeted gB:NT virus showed efficient cell killing at 10 gc/cell, similar to KOS. However, A549 cells were killed less efficiently by the retargeted virus than by KOS at lower virus input, an observation that may relate to the efficiency of lateral spread which can potentially be enhanced by spread-enhancing mutations such as found in the gH:KV allele described above. As expected, the retargeted gB:wt virus showed less killing activity on both cell lines.

[0129] These results show that the retargeted gB:NT virus has oncolytic capabilities comparable to a wild-type virus, although efficiency is likely affected by the targeted cell type.

EXAMPLE 13

[0130] This example demonstrates specificity and oncolytic potency of the retargeted gB:NT virus in vivo.

[0131] The EGFR scFv used in retargeted viruses as described herein is specific for human EGFR while wt HSV-1 KOS is neurotoxic in mouse strains such as BALB/c. Thus, neurotoxicity testing in mice was performed as a stringent measure of the specificity of the retargeted gB:NT virus. Groups of four mice were injected intracranially with 5×10^3 gc KOS or a 100,000-fold higher dose of the retargeted gB:NT virus (5×10^8 gc). Of the animals injected with KOS virus, one died on day 6, two on day 7, and one on day 9. In contrast, all four mice injected with the retargeted virus remained alive and symptom-free throughout the 47-day observation period. In a separate experiment, brain sections of injected mice were analyzed for the presence of virus by immunostaining for the viral ICP4 protein. Abundant virus was detected in the brain of a mouse that had died on day 21 after receiving KOS at a dose of 1×10^3 gc, while little virus was detected in brain sections from a mouse that had been sacrificed on day 37 (no symptoms) after injection of 5×10^8 gc of the retargeted gB:NT virus. Virus stocks used for these experiments were the same as those used in Example 11, showing comparable infection of HSV-susceptible cells lines expressing human or simian EGFR by equal amounts of KOS and the retargeted virus, strongly arguing against the possibility that the observed differences in neurotoxicity between these two viruses were due to dosing errors. Thus, the results confirmed that the retargeted gB:NT virus was

effectively detargeted from its natural receptors in mouse brain and was harmless in this complex in vivo environment lacking the targeted receptor.

[0132] Next, the retargeted gB:NT virus was examined to determine whether it would preferentially accumulate in EGFR-positive human tumors in nude mice. Following the establishment of subcutaneous U87 flank tumors (700-1,000 mm³), equal gc of KOS and the retargeted gB:NT virus were administered by tail-vein injection. The animals were sacrificed 2 days later and the amount of virus in the tumor and various organs determined by qPCR for the viral ICP4 gene. As shown in FIG. 8A, the number of KOS genomes per 100 ng tissue DNA was lower in the tumors than in the liver, spleen or intestine of the same animals, but comparable to the low numbers in other organs. In contrast, the retargeted virus was detected at 100-1,000-fold higher levels or more in the tumors than in other tissues. These results clearly demonstrate that the retargeted virus preferentially homed to the human tumor tissue.

[0133] To examine the anti-tumor efficacy of the retargeted gB:NT virus, U87 flank tumors averaging approximately 140 mm³ in size were injected with PBS or virus at 5×10⁸ gc. As shown in FIG. 8B, PBS-injected tumors increased in size to 900-1,000 mm³ over a period of 29 days, whereas the growth of tumors injected with the retargeted virus was suppressed during the first 20 days, resulting in only a limited increase in size at the end of the observation period (FIG. 8B).

[0134] While these results indicate that a single injection of the retargeted virus was not sufficient for complete tumor eradication, they provide compelling evidence of effective tumoricidal activity without adverse effects attributable to the virus.

EXAMPLE 14

[0135] This example demonstrates HSV vector targeting to carcinoembryonic antigen (CEA), a cell surface molecule frequently overexpressed in human cancers.

[0136] A CEA-retargeted gD gene, gD:Δ224/38C-scCEA, was created by inserting the coding sequences of the F39 anti-CEA scFv (scCEA, 238 amino acids) into the 2-24 deletion of gD:Δ224/38C (FIG. 9) and was tested for transient complementation of K-gB:wtΔgD and K-gB:NTΔgD on CHO cells expressing CEA or EGFR. The scCEA in gD was found to enable entry of the gB:NTΔgD virus into CHO-CEA, but not CHO-EGFR cells, and no entry into either cell line was detected for the complemented gB:wtΔgD virus. As controls, the scEGFR-retargeted gD:Δ224/38C construct efficiently complemented K-gB:NTΔgD, but not K-gB:wtΔgD, on CHO-EGFR cells.

[0137] Recombinant viruses were then prepared with the CEA-retargeted gD allele and examined for CEA-dependent entry into CEA-positive MKN45 and CEA-negative MKN74 human gastric carcinoma cells. KOS entered into both cell lines, consistent with previous observations (Mol.

Ther. 19, 507-514, 2011), but the retargeted viruses entered only into MKN45 cells. More entry into MKN45 cells was observed with the gB:NT version of the scCEA virus than with the gB:wt version, although the difference was not as dramatic as that seen with the scEGFR viruses, and entry by the gB:NT version did not quite reach the level of KOS entry.

[0138] These results demonstrate that ligands other than for EGFR can be inserted into gD:Δ224/38C to accomplish efficient infection through different non-HSV receptors in combination with the gB:NT allele. It is expected that the efficiency of retargeted infection relative to KOS will vary with factors such as the receptor/ligand pair, including the abundance and nature of the targeted receptors.

[0139] All references, including publications, patent applications, and patents, cited herein are hereby incorporated by reference to the same extent as if each reference were individually and specifically indicated to be incorporated by reference and were set forth in its entirety herein.

[0140] The use of the terms “a” and “an” and “the” and similar referents in the context of describing the invention (especially in the context of the following claims) are to be construed to cover both the singular and the plural, unless otherwise indicated herein or clearly contradicted by context. The terms “comprising,” “having,” “including,” and “containing” are to be construed as open-ended terms (i.e., meaning “including, but not limited to,”) unless otherwise noted. Recitation of ranges of values herein are merely intended to serve as a shorthand method of referring individually to each separate value falling within the range, unless otherwise indicated herein, and each separate value is incorporated into the specification as if it were individually recited herein. All methods described herein can be performed in any suitable order unless otherwise indicated herein or otherwise clearly contradicted by context. The use of any and all examples, or exemplary language (e.g., “such as”) provided herein, is intended merely to better illuminate the invention and does not pose a limitation on the scope of the invention unless otherwise claimed. No language in the specification should be construed as indicating any non-claimed element as essential to the practice of the invention.

[0141] Preferred embodiments of this invention are described herein, including the best mode known to the inventors for carrying out the invention. Variations of those preferred embodiments may become apparent to those of ordinary skill in the art upon reading the foregoing description. The inventors expect skilled artisans to employ such variations as appropriate, and the inventors intend for the invention to be practiced otherwise than as specifically described herein. Accordingly, this invention includes all modifications and equivalents of the subject matter recited in the claims appended hereto as permitted by applicable law. Moreover, any combination of the above-described elements in all possible variations thereof is encompassed by the invention unless otherwise indicated herein or otherwise clearly contradicted by context.

SEQUENCE LISTING

<160> NUMBER OF SEQ ID NOS: 10

<210> SEQ ID NO 1

<211> LENGTH: 9

-continued

<212> TYPE: PRT
<213> ORGANISM: Artificial Sequence
<220> FEATURE:
<223> OTHER INFORMATION: gB:D285
<220> FEATURE:
<221> NAME/KEY: MISC_FEATURE
<222> LOCATION: (5)..(5)
<223> OTHER INFORMATION: wherein Xaa is other than D

<400> SEQUENCE: 1

Val Tyr Pro Tyr Xaa Glu Phe Val Leu
1 5

<210> SEQ ID NO 2
<211> LENGTH: 9
<212> TYPE: PRT
<213> ORGANISM: Artificial Sequence
<220> FEATURE:
<223> OTHER INFORMATION: gB:A549
<220> FEATURE:
<221> NAME/KEY: MISC_FEATURE
<222> LOCATION: (6)..(6)
<223> OTHER INFORMATION: wherein Xaa is other than A

<400> SEQUENCE: 2

Lys Leu Asn Pro Asn Xaa Ile Ala Ser
1 5

<210> SEQ ID NO 3
<211> LENGTH: 9
<212> TYPE: PRT
<213> ORGANISM: Artificial Sequence
<220> FEATURE:
<223> OTHER INFORMATION: gB:S668
<220> FEATURE:
<221> NAME/KEY: MISC_FEATURE
<222> LOCATION: (5)..(5)
<223> OTHER INFORMATION: wherein Xaa is other than S

<400> SEQUENCE: 3

Ile Thr Thr Val Xaa Thr Phe Ile Asp
1 5

<210> SEQ ID NO 4
<211> LENGTH: 9
<212> TYPE: PRT
<213> ORGANISM: Artificial Sequence
<220> FEATURE:
<223> OTHER INFORMATION: gH:N753
<220> FEATURE:
<221> NAME/KEY: MISC_FEATURE
<222> LOCATION: (5)..(5)
<223> OTHER INFORMATION: wherein Xaa is other than N

<400> SEQUENCE: 4

Val Asp Thr Asp Xaa Thr Gln Gln Gln
1 5

<210> SEQ ID NO 5
<211> LENGTH: 9
<212> TYPE: PRT
<213> ORGANISM: Artificial Sequence
<220> FEATURE:
<223> OTHER INFORMATION: gH:A778
<220> FEATURE:
<221> NAME/KEY: MISC_FEATURE
<222> LOCATION: (5)..(5)
<223> OTHER INFORMATION: wherein Xaa is other than A

-continued

<400> SEQUENCE: 5

Val Pro Ser Thr Xaa Leu Leu Leu Phe
1 5

<210> SEQ ID NO 6
<211> LENGTH: 9
<212> TYPE: PRT
<213> ORGANISM: Artificial Sequence
<220> FEATURE:
<223> OTHER INFORMATION: gB:D285N

<400> SEQUENCE: 6

Val Tyr Pro Tyr Asn Glu Phe Val Leu
1 5

<210> SEQ ID NO 7
<211> LENGTH: 9
<212> TYPE: PRT
<213> ORGANISM: Artificial Sequence
<220> FEATURE:
<223> OTHER INFORMATION: gB:A549T

<400> SEQUENCE: 7

Lys Leu Asn Pro Asn Thr Ile Ala Ser
1 5

<210> SEQ ID NO 8
<211> LENGTH: 9
<212> TYPE: PRT
<213> ORGANISM: Artificial Sequence
<220> FEATURE:
<223> OTHER INFORMATION: gB:S668N

<400> SEQUENCE: 8

Ile Thr Thr Val Asn Thr Phe Ile Asp
1 5

<210> SEQ ID NO 9
<211> LENGTH: 9
<212> TYPE: PRT
<213> ORGANISM: Artificial Sequence
<220> FEATURE:
<223> OTHER INFORMATION: gH:N753K

<400> SEQUENCE: 9

Val Asp Thr Asp Lys Thr Gln Gln Gln
1 5

<210> SEQ ID NO 10
<211> LENGTH: 9
<212> TYPE: PRT
<213> ORGANISM: Artificial Sequence
<220> FEATURE:
<223> OTHER INFORMATION: gH:A778V

<400> SEQUENCE: 10

Val Pro Ser Thr Val Leu Leu Leu Phe
1 5

1. An HSV vector comprising an envelope comprising one or more mutant gB and/or gH envelope glycoproteins, whereby the HSV vector exhibits at least 25% increased rate-of-entry after 20 minutes when assayed at 30° C. in Vero cells after first incubating at 4° C. relative to a control HSV comprising wild-type gB and gH glycoproteins.

2. The HSV vector of claim 1, further comprising a non-native ligand capable of specifically binding a surface component of a predetermined cell type.

3. The HSV vector of claim 2, wherein the predetermined cell type is a cancer cell.

4. The HSV vector of claim 2, wherein the ligand is incorporated into a viral envelope glycoprotein of the HSV vector.

5. The HSV vector of claim 1, wherein at least one additional viral envelope glycoprotein of the HSV vector is impaired for binding to its natural receptor or is deleted.

6. The HSV vector of claim 1, comprising a genome comprising an exogenous expression cassette.

7. The HSV of claim 6, wherein the expression cassette encodes an agent that enhances tumor killing activity.

8. The HSV vector of claim 1, comprising a genome comprising a target sequence for a cellular microRNA.

9. The HSV vector of claim 1, which is a human HSV-1 vector.

10. A viral stock comprising the HSV vector of claim 1.

11. An HSV vector comprising an envelope comprising one or more mutant gB and/or gH envelope proteins, whereby the HSV vector exhibits at least 25% increased rate-of-entry after 20 minutes when assayed at 37° C. in Vero cells after first incubating at 4° C. relative to a control HSV comprising wild-type gB and gH glycoproteins.

12. The HSV vector of claim 11, further comprising a non-native ligand capable of specifically binding a surface component of a predetermined cell type.

13. The HSV vector of claim 12, wherein the predetermined cell type is a cancer cell.

14. The HSV vector of claim 12, wherein the ligand is incorporated into a viral envelope glycoprotein of the HSV vector.

15. The HSV vector of claim 11, wherein at least one additional viral envelope glycoprotein of the HSV vector is impaired for binding to its natural receptor or is deleted.

16. The HSV vector of claim 11, comprising a genome comprising an exogenous expression cassette.

17. The HSV of claim 16, wherein the expression cassette encodes an agent that enhances tumor killing activity.

18. The HSV vector of claim 11, comprising a genome comprising a target sequence for a cellular microRNA.

19. The HSV vector of claim 11, which is a human HSV-1 vector.

20. A viral stock comprising the HSV vector of claim 11.

* * * * *